

## IGFBP6 antibody, C-term

Cat. No. GTX81728

|                     |                |
|---------------------|----------------|
| <b>Host</b>         | Rabbit         |
| <b>Clonality</b>    | Polyclonal     |
| <b>Isotype</b>      | IgG            |
| <b>Applications</b> | WB, IHC-P, FCM |
| <b>Reactivity</b>   | Human          |

Package  
400 µl

## Applications

## Application Note

\*Optimal dilutions/concentrations should be determined by the researcher.

| Suggested dilution | Recommended dilution |
|--------------------|----------------------|
| WB                 | 1:1000               |
| IHC-P              | 1:50-1:100           |
| FCM                | 1:10-1:50            |

Not tested in other applications.

**Calculated MW** 25 kDa. ([Note](#))

## Properties

|                      |  |
|----------------------|--|
| <b>Form</b>          | Liquid   |
| <b>Buffer</b>        | PBS  |
| <b>Preservative</b>  | 0.09% Sodium azide   |
| <b>Storage</b>       | Store as concentrated solution. Centrifuge briefly prior to opening vial. For short-term storage (1-2 weeks), store at 4°C. For long-term storage, aliquot and store at -20°C or below. Avoid multiple freeze-thaw cycles. |
| <b>Concentration</b> | Batch dependent (Please refer to the vial label for the specific concentration.)   |
| <b>Immunogen</b>     | KLH conjugated synthetic peptide between 176-200 amino acids from the C-terminal region of human IGFBP6.   |
| <b>Purification</b>  | Saturated Ammonium Sulfate (SAS) precipitation followed by dialysis against PBS.   |
| <b>Conjugation</b>   | Unconjugated   |

## Note

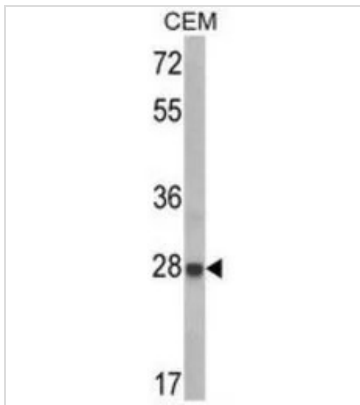
For laboratory research use only. Not for any clinical, therapeutic, or diagnostic use in humans or animals. Not for animal or human consumption.

Purchasers shall not, and agree not to enable third parties to, analyze, copy, reverse engineer or otherwise attempt to determine the structure or sequence of the product.



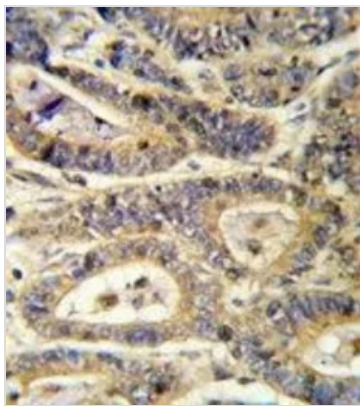
For full product information, images and publications, please visit our [website](#).

DATA IMAGES



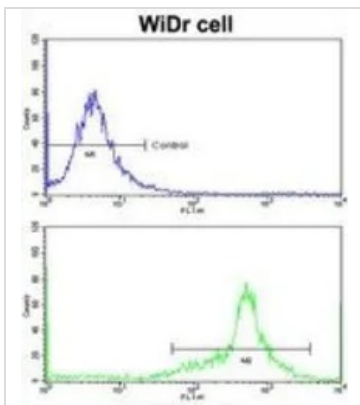
**GTX81728 WB Image**

WB analysis of CEM cell lysate (35ug/lane) using GTX81728 IGF6 antibody, C-term.



**GTX81728 IHC-P Image**

IHC-P analysis of human colon carcinoma using GTX81728 IGF6 antibody, C-term.



**GTX81728 FCM Image**

FACS analysis of WiDr cells using GTX81728 IGF6 antibody, C-term.

Top histogram : negative control

Bottom histogram : WiDr cells



For full product information, images and publications, please visit our [website](#).