

CYP2C19 antibody, Internal

Cat. No. GTX81761

Host	Rabbit
Clonality	Polyclonal
Isotype	IgG
Applications	WB, IHC-P
Reactivity	Human

Package
400 µl

Applications

Application Note

*Optimal dilutions/concentrations should be determined by the researcher.

Suggested dilution	Recommended dilution
WB	1:1000
IHC-P	1:10-1:50

Not tested in other applications.

Calculated MW 56 kDa. ([Note](#))

Properties

Form	Liquid
Buffer	PBS
Preservative	0.09% Sodium azide
Storage	Store as concentrated solution. Centrifuge briefly prior to opening vial. For short-term storage (1-2 weeks), store at 4°C. For long-term storage, aliquot and store at -20°C or below. Avoid multiple freeze-thaw cycles.
Concentration	Batch dependent (Please refer to the vial label for the specific concentration.)
Immunogen	KLH conjugated synthetic peptide between 257-285 amino acids from the Central region of human CYP2C19.
Purification	Saturated Ammonium Sulfate (SAS) precipitation followed by dialysis against PBS.
Conjugation	Unconjugated

Note

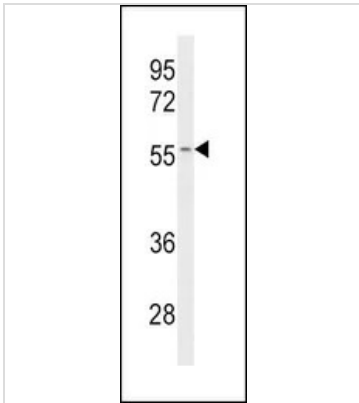
For laboratory research use only. Not for any clinical, therapeutic, or diagnostic use in humans or animals. Not for animal or human consumption.

Purchasers shall not, and agree not to enable third parties to, analyze, copy, reverse engineer or otherwise attempt to determine the structure or sequence of the product.



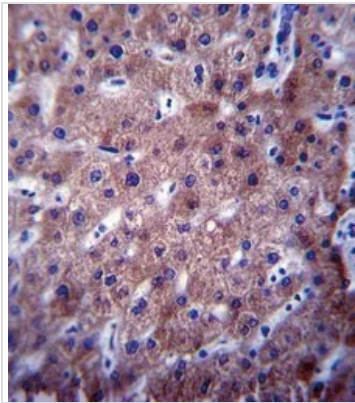
For full product information, images and publications, please visit our [website](#).

DATA IMAGES



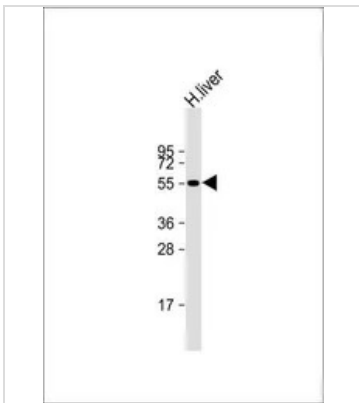
GTX81761 WB Image

WB analysis of Jurkat cell lysate (35ug/lane) using GTX81761 CYP2C19 antibody, Internal.



GTX81761 IHC-P Image

IHC-P analysis of human liver tissue using GTX81761 CYP2C19 antibody, Internal.



GTX81761 WB Image

WB analysis of human liver lysate using GTX81761 CYP2C19 antibody, Internal.

Loading : 20 µg per lane

Dilution : 1:2000



For full product information, images and publications, please visit our [website](#).