

## COL6A1 antibody, C-term

Cat. No. GTX81823

Host	Rabbit
Clonality	Polyclonal
Isotype	IgG
Applications	WB, ICC/IF, IHC-P, FCM
Reactivity	Human

Package  
400 µl

## Applications

## Application Note

\*Optimal dilutions/concentrations should be determined by the researcher.

Suggested dilution	Recommended dilution
WB	1:1000
ICC/IF	1:10-1:50
IHC-P	1:10-1:50
FCM	1:10-1:50

Not tested in other applications.

Calculated MW 109 kDa. ([Note](#))

## Properties

Form	Liquid
Buffer	PBS
Preservative	0.09% Sodium azide
Storage	Store as concentrated solution. Centrifuge briefly prior to opening vial. For short-term storage (1-2 weeks), store at 4°C. For long-term storage, aliquot and store at -20°C or below. Avoid multiple freeze-thaw cycles.
Concentration	Batch dependent (Please refer to the vial label for the specific concentration.)
Immunogen	KLH conjugated synthetic peptide between 831-858 amino acids from the C-terminal region of human COL6A1.
Purification	Saturated Ammonium Sulfate (SAS) precipitation followed by dialysis against PBS.
Conjugation	Unconjugated

## Note

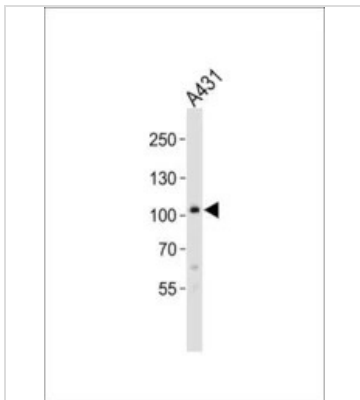
For laboratory research use only. Not for any clinical, therapeutic, or diagnostic use in humans or animals. Not for animal or human consumption.

Purchasers shall not, and agree not to enable third parties to, analyze, copy, reverse engineer or otherwise attempt to determine the structure or sequence of the product.



For full product information, images and publications, please visit our [website](#).

## DATA IMAGES

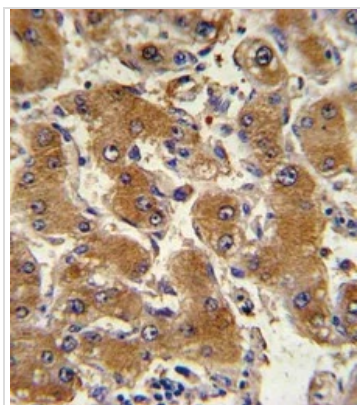


### GTX81823 WB Image

WB analysis of A431 cell lysate using GTX81823 COL6A1 antibody, C-term.

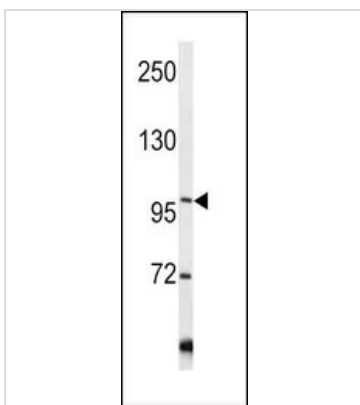
Loading : 20ug

Dilution : 1:1000



### GTX81823 IHC-P Image

IHC-P analysis of human hepatocarcinoma using GTX81823 COL6A1 antibody, C-term.



### GTX81823 WB Image

WB analysis of Y79 cell lysate (35ug/lane) using GTX81823 COL6A1 antibody, C-term.



For full product information, images and publications, please visit our [website](https://www.genetex.com).