

## CPZ antibody, N-term

**Cat. No. GTX81852**

<b>Host</b>	Rabbit
<b>Clonality</b>	Polyclonal
<b>Isotype</b>	IgG
<b>Applications</b>	WB, IHC-P
<b>Reactivity</b>	Human

References ( 1 )  
 Package  
 400 µl

## Applications

**Application Note**

\*Optimal dilutions/concentrations should be determined by the researcher.

Suggested dilution	Recommended dilution
WB	1:1000
IHC-P	1:50-1:100

Not tested in other applications.

**Calculated MW** 74 kDa. ( [Note](#) )

## Properties

<b>Form</b>	Liquid
<b>Buffer</b>	PBS
<b>Preservative</b>	0.09% Sodium azide
<b>Storage</b>	Store as concentrated solution. Centrifuge briefly prior to opening vial. For short-term storage (1-2 weeks), store at 4°C. For long-term storage, aliquot and store at -20°C or below. Avoid multiple freeze-thaw cycles.
<b>Concentration</b>	Batch dependent (Please refer to the vial label for the specific concentration.)
<b>Immunogen</b>	KLH conjugated synthetic peptide between 143-172 amino acids from the N-terminal region of human CPZ.
<b>Purification</b>	Saturated Ammonium Sulfate (SAS) precipitation followed by dialysis against PBS.
<b>Conjugation</b>	Unconjugated

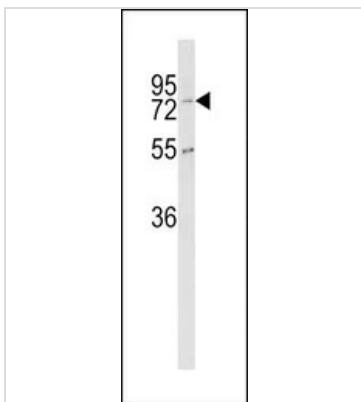
**Note**

For laboratory research use only. Not for any clinical, therapeutic, or diagnostic use in humans or animals. Not for animal or human consumption.

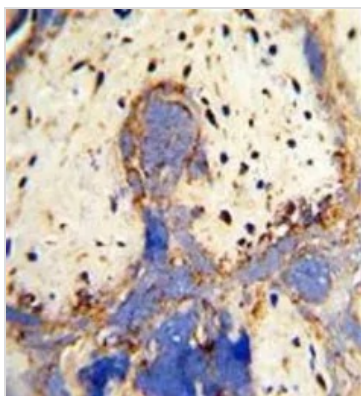
Purchasers shall not, and agree not to enable third parties to, analyze, copy, reverse engineer or otherwise attempt to determine the structure or sequence of the product.



For full product information, images and publications, please visit our [website](#).

**DATA IMAGES**

**GTX81852 WB Image**

WB analysis of K562 cell lysate (35ug/lane) using GTX81852 CPZ antibody, N-term.


**GTX81852 IHC-P Image**

IHC-P analysis of human placenta tissue using GTX81852 CPZ antibody, N-term.



For full product information, images and publications, please visit our [website](#).