

YB1 antibody, C-term

Cat. No. GTX81909

Host	Rabbit
Clonality	Polyclonal
Isotype	IgG
Applications	WB, ICC/IF, IHC-P
Reactivity	Human, Mouse

References (1)

Package

400 µl

Applications

Application Note

*Optimal dilutions/concentrations should be determined by the researcher.

Suggested dilution	Recommended dilution
WB	1:1000
ICC/IF	1:10-1:50
IHC-P	Assay dependent

Not tested in other applications.

Calculated MW 36 kDa. ([Note](#))

Properties

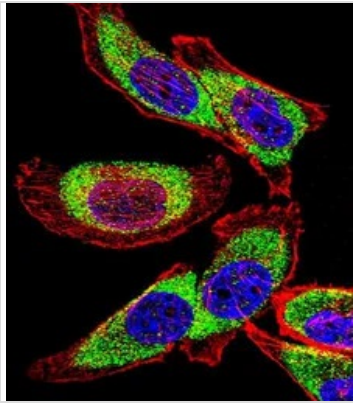
Form	Liquid
Buffer	PBS
Preservative	0.09% Sodium azide
Storage	Store as concentrated solution. Centrifuge briefly prior to opening vial. For short-term storage (1-2 weeks), store at 4°C. For long-term storage, aliquot and store at -20°C or below. Avoid multiple freeze-thaw cycles.
Concentration	Batch dependent (Please refer to the vial label for the specific concentration.)
Immunogen	KLH conjugated synthetic peptide between 276-305 amino acids from the C-terminal region of human YBX1.
Purification	Saturated Ammonium Sulfate (SAS) precipitation followed by dialysis against PBS.
Conjugation	Unconjugated

Note

For laboratory research use only. Not for any clinical, therapeutic, or diagnostic use in humans or animals. Not for animal or human consumption.

Purchasers shall not, and agree not to enable third parties to, analyze, copy, reverse engineer or otherwise attempt to determine the structure or sequence of the product.

For full product information, images and publications, please visit our [website](#).

DATA IMAGES

GTX81909 ICC/IF Image

ICC/IF analysis of U251 cells using GTX81909 YB1 antibody, C-term.

Green : YB1

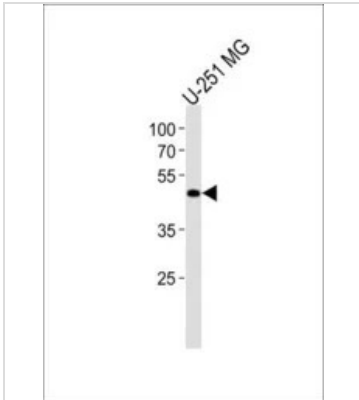
Red : Actin filament

Blue : cell nucleus

Fixation : 4% paraformaldehyde (PFA) (20 min)

Permeabilization : Triton X-100 (0.1%, 10 min)

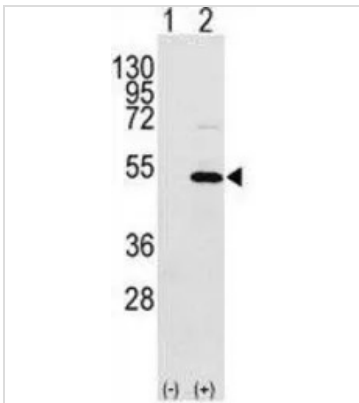
Dilution : 1:25


GTX81909 WB Image

WB analysis of U-251 MG cell lysate using GTX81909 YB1 antibody, C-term.

Loading : 35ug

Dilution : 1:1000


GTX81909 WB Image

WB analysis of 293 cell lysate (2 ug/lane) either nontransfected (Lane 1) or transiently transfected with the YB1 (Lane 2) using GTX81909 YB1 antibody, C-term.



For full product information, images and publications, please visit our [website](https://www.genetex.com).