

# ABCB5 antibody, N-term

**Cat. No. GTX81935**

<b>Host</b>	Rabbit
<b>Clonality</b>	Polyclonal
<b>Isotype</b>	IgG
<b>Applications</b>	WB, FCM
<b>Reactivity</b>	Human

**Package**  
400 µl

## Applications

### Application Note

\*Optimal dilutions/concentrations should be determined by the researcher.

Suggested dilution	Recommended dilution
WB	1:1000
FCM	1:10-1:50

Not tested in other applications.

**Calculated MW** 139 kDa. ([Note](#))

## Properties

<b>Form</b>	Liquid
<b>Buffer</b>	PBS
<b>Preservative</b>	0.09% Sodium azide
<b>Storage</b>	Store as concentrated solution. Centrifuge briefly prior to opening vial. For short-term storage (1-2 weeks), store at 4°C. For long-term storage, aliquot and store at -20°C or below. Avoid multiple freeze-thaw cycles.
<b>Concentration</b>	Batch dependent (Please refer to the vial label for the specific concentration.)
<b>Immunogen</b>	KLH conjugated synthetic peptide between 1-30 amino acids from the N-terminal region of human ABCB5.
<b>Purification</b>	Saturated Ammonium Sulfate (SAS) precipitation followed by dialysis against PBS.
<b>Conjugation</b>	Unconjugated

### Note

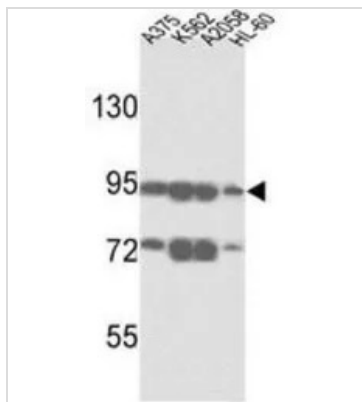
For laboratory research use only. Not for any clinical, therapeutic, or diagnostic use in humans or animals. Not for animal or human consumption.

Purchasers shall not, and agree not to enable third parties to, analyze, copy, reverse engineer or otherwise attempt to determine the structure or sequence of the product.



For full product information, images and publications, please visit our [website](#).

## DATA IMAGES



### GTx81935 WB Image

WB analysis of A375, K562, A2058 and HL-60 cell lysate (35ug/lane) using GTx81935 ABCB5 antibody, N-term.



For full product information, images and publications, please visit our [website](#).