

## c-Abl (phospho Tyr412) antibody

**Cat. No. GTX81938**

<b>Host</b>	Rabbit
<b>Clonality</b>	Polyclonal
<b>Isotype</b>	IgG
<b>Applications</b>	WB, IHC-P, Dot
<b>Reactivity</b>	Human

**Package**  
400 µl

### Applications

#### Application Note

\*Optimal dilutions/concentrations should be determined by the researcher.

Suggested dilution	Recommended dilution
WB	1:1000
IHC-P	1:50-1:100
Dot	1:500

Not tested in other applications.

**Calculated MW** 123 kDa. ([Note](#))

#### Product Note

This antibody is raised against mouse c-Abl (isoform b) phosphorylated at Tyr412. Based on sequence homology, it is predicted to react with c-Abl (isoform a) and ABL2 when phosphorylated at the corresponding residues - c-Abl (isoform a) Tyr393 and ABL2 Tyr439.

### Properties

<b>Form</b>	Liquid
<b>Buffer</b>	PBS
<b>Preservative</b>	0.09% Sodium azide
<b>Storage</b>	Store as concentrated solution. Centrifuge briefly prior to opening vial. For short-term storage (1-2 weeks), store at 4°C. For long-term storage, aliquot and store at -20°C or below. Avoid multiple freeze-thaw cycles.
<b>Concentration</b>	Batch dependent (Please refer to the vial label for the specific concentration.)
<b>Immunogen</b>	KLH conjugated synthetic phosphopeptide corresponding to amino acid residues surrounding Y412 of human c-Abl.
<b>Purification</b>	Protein A purified, followed by peptide affinity purification.
<b>Conjugation</b>	Unconjugated

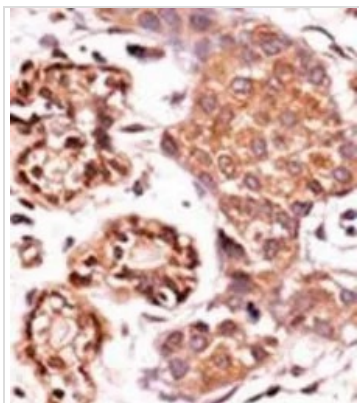


For full product information, images and publications, please visit our [website](#).

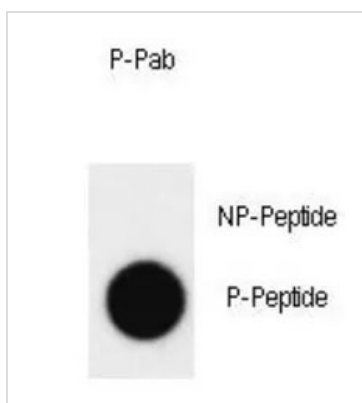
For laboratory research use only. Not for any clinical, therapeutic, or diagnostic use in humans or animals. Not for animal or human consumption.

**Note**

Purchasers shall not, and agree not to enable third parties to, analyze, copy, reverse engineer or otherwise attempt to determine the structure or sequence of the product.

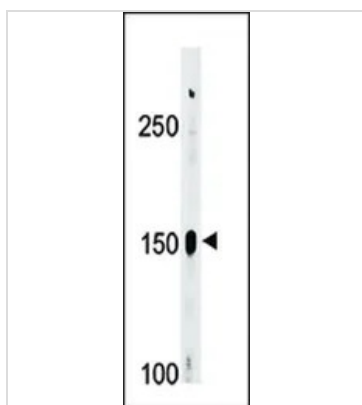
**DATA IMAGES**

**GTX81938 IHC-P Image**

IHC-P analysis of human breast carcinoma using GTX81938 c-Abl (phospho Tyr412) Antibody.


**GTX81938 Dot Image**

Dot Blot analysis of c-Abl phospho- or Non phospho-peptide using GTX81938 c-Abl (phospho Tyr412) Antibody. 50ng of Phospho-peptide or Non phospho-peptide per dot were adsorbed.

Dilution : 0.5µg/ml


**GTX81938 WB Image**

WB analysis of A2058 cell lysate (35ug/lane) using GTX81938 c-Abl (phospho Tyr412) Antibody.



For full product information, images and publications, please visit our [website](https://www.genetex.com).