

## MDH1 antibody, C-term

Cat. No. GTX81955

|                     |                |
|---------------------|----------------|
| <b>Host</b>         | Rabbit         |
| <b>Clonality</b>    | Polyclonal     |
| <b>Isotype</b>      | IgG            |
| <b>Applications</b> | WB, IHC-P, FCM |
| <b>Reactivity</b>   | Human          |

References ( 1 )

Package

400 µl

## Applications

## Application Note

\*Optimal dilutions/concentrations should be determined by the researcher.

| Suggested dilution | Recommended dilution |
|--------------------|----------------------|
| WB                 | 1:1000               |
| IHC-P              | 1:10-1:50            |
| FCM                | 1:10-1:50            |

Not tested in other applications.

Calculated MW 36 kDa. ( [Note](#) )

## Properties

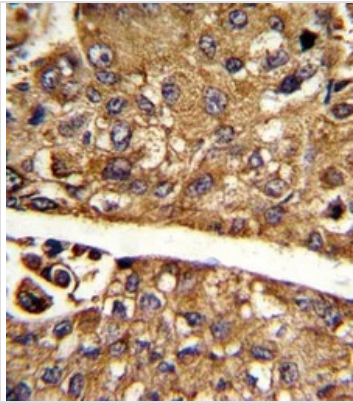
|                      |  |
|----------------------|--|
| <b>Form</b>          | Liquid   |
| <b>Buffer</b>        | PBS  |
| <b>Preservative</b>  | 0.09% Sodium azide   |
| <b>Storage</b>       | Store as concentrated solution. Centrifuge briefly prior to opening vial. For short-term storage (1-2 weeks), store at 4°C. For long-term storage, aliquot and store at -20°C or below. Avoid multiple freeze-thaw cycles. |
| <b>Concentration</b> | Batch dependent (Please refer to the vial label for the specific concentration.)   |
| <b>Immunogen</b>     | KLH conjugated synthetic peptide between 286-314 amino acids from the C-terminal region of human MDH1.   |
| <b>Purification</b>  | Saturated Ammonium Sulfate (SAS) precipitation followed by dialysis against PBS.   |
| <b>Conjugation</b>   | Unconjugated   |

## Note

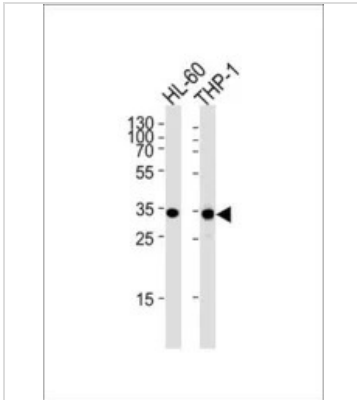
For laboratory research use only. Not for any clinical, therapeutic, or diagnostic use in humans or animals. Not for animal or human consumption.

Purchasers shall not, and agree not to enable third parties to, analyze, copy, reverse engineer or otherwise attempt to determine the structure or sequence of the product.

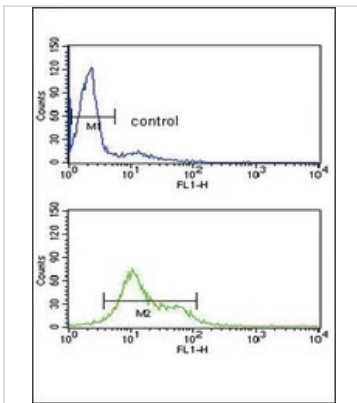
For full product information, images and publications, please visit our [website](#).

**DATA IMAGES**

**GTX81955 IHC-P Image**

IHC-P analysis of human hepatocarcinoma using GTX81955 MDH1 antibody, C-term.


**GTX81955 WB Image**

WB analysis of HL-60, THP-1 cell lysate (35ug/lane) using GTX81955 MDH1 antibody, C-term.


**GTX81955 FCM Image**

FACS analysis of HL-60 cells using GTX81955 MDH1 antibody, C-term.

Top histogram : negative control

Bottom histogram : HL-60 cells



For full product information, images and publications, please visit our [website](https://www.genetex.com).