

## EGR1 antibody, N-term

**Cat. No. GTX81956**

<b>Host</b>	Rabbit
<b>Clonality</b>	Polyclonal
<b>Isotype</b>	IgG
<b>Applications</b>	WB, ICC/IF, FCM
<b>Reactivity</b>	Human, Mouse, Rat

References ( 1 )

Package

400 µl

## Applications

**Application Note**

\*Optimal dilutions/concentrations should be determined by the researcher.

Suggested dilution	Recommended dilution
WB	1:1000
ICC/IF	1:10-1:50
FCM	1:10-1:50

Not tested in other applications.

**Calculated MW** 58 kDa. ( [Note](#) )

## Properties

<b>Form</b>	Liquid
<b>Buffer</b>	PBS
<b>Preservative</b>	0.09% Sodium azide
<b>Storage</b>	Store as concentrated solution. Centrifuge briefly prior to opening vial. For short-term storage (1-2 weeks), store at 4°C. For long-term storage, aliquot and store at -20°C or below. Avoid multiple freeze-thaw cycles.
<b>Concentration</b>	Batch dependent (Please refer to the vial label for the specific concentration.)
<b>Immunogen</b>	KLH conjugated synthetic peptide between 9-37 amino acids from the N-terminal region of human EGR1.
<b>Purification</b>	Saturated Ammonium Sulfate (SAS) precipitation followed by dialysis against PBS.
<b>Conjugation</b>	Unconjugated

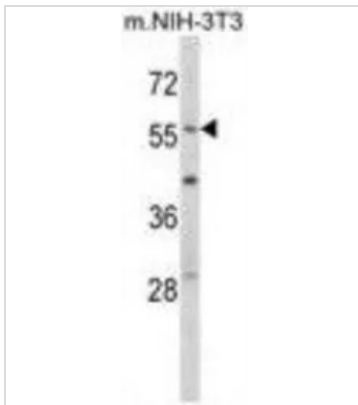
**Note**

For laboratory research use only. Not for any clinical, therapeutic, or diagnostic use in humans or animals. Not for animal or human consumption.

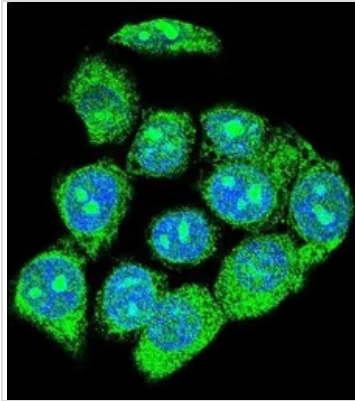
Purchasers shall not, and agree not to enable third parties to, analyze, copy, reverse engineer or otherwise attempt to determine the structure or sequence of the product.

For full product information, images and publications, please visit our [website](#).

## DATA IMAGES

**GTX81956 WB Image**

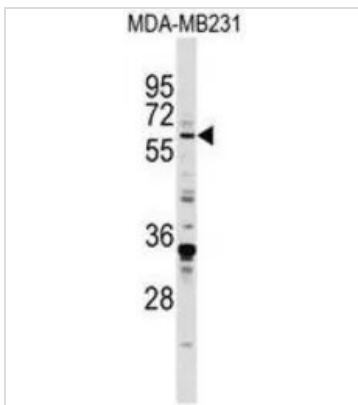
WB analysis of NIH-3T3 tissue lysate (35ug/lane) using GTX81956 EGR1 antibody, N-term.

**GTX81956 ICC/IF Image**

ICC/IF analysis of HeLa cells using GTX81956 EGR1 antibody, N-term.

Green : EGR1

Blue : DAPI

**GTX81956 WB Image**

WB analysis of MDA-MB231 cell lysate (35ug/lane) using GTX81956 EGR1 antibody, N-term.



For full product information, images and publications, please visit our [website](#).