

EPCR antibody, Internal

Cat. No. GTX81959

Host	Rabbit
Clonality	Polyclonal
Isotype	IgG
Applications	WB, IHC-P, FCM
Reactivity	Human

Package
400 µl

Applications

Application Note

*Optimal dilutions/concentrations should be determined by the researcher.

Suggested dilution	Recommended dilution
WB	1:1000
IHC-P	1:50-1:100
FCM	1:10-1:50

Not tested in other applications.

Calculated MW 27 kDa. ([Note](#))

Properties

Form	Liquid
Buffer	PBS
Preservative	0.09% Sodium azide
Storage	Store as concentrated solution. Centrifuge briefly prior to opening vial. For short-term storage (1-2 weeks), store at 4°C. For long-term storage, aliquot and store at -20°C or below. Avoid multiple freeze-thaw cycles.
Concentration	Batch dependent (Please refer to the vial label for the specific concentration.)
Immunogen	KLH conjugated synthetic peptide between 104-132 amino acids from the Central region of human CD201.
Purification	Saturated Ammonium Sulfate (SAS) precipitation followed by dialysis against PBS.
Conjugation	Unconjugated

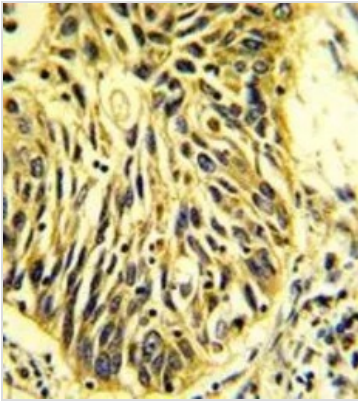
Note

For laboratory research use only. Not for any clinical, therapeutic, or diagnostic use in humans or animals. Not for animal or human consumption.

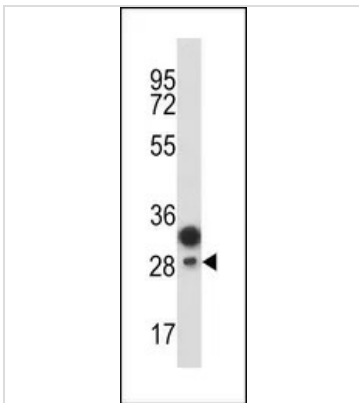
Purchasers shall not, and agree not to enable third parties to, analyze, copy, reverse engineer or otherwise attempt to determine the structure or sequence of the product.



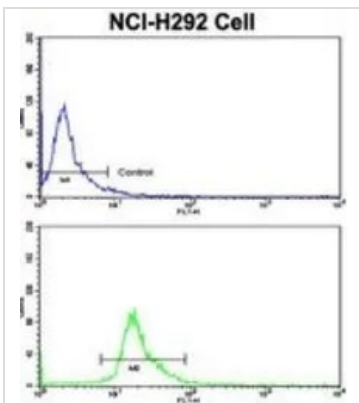
For full product information, images and publications, please visit our [website](#).

DATA IMAGES

GTX81959 IHC-P Image

IHC-P analysis of human lung carcinoma using GTX81959 EPCR antibody, Internal.


GTX81959 WB Image

WB analysis of T47D cell lysate (35ug/lane) using GTX81959 EPCR antibody, Internal.


GTX81959 FCM Image

FACS analysis of NCI-H292 cells using GTX81959 EPCR antibody, Internal.

Top histogram : negative control

Bottom histogram : NCI-H292 cells



For full product information, images and publications, please visit our [website](http://www.genetex.com).