

## CD38 antibody, C-term

Cat. No. GTX81962

<b>Host</b>	Rabbit
<b>Clonality</b>	Polyclonal
<b>Isotype</b>	IgG
<b>Applications</b>	WB, ICC/IF, IHC-P, FCM
<b>Reactivity</b>	Human

**Package**  
400 µl

## Applications

## Application Note

\*Optimal dilutions/concentrations should be determined by the researcher.

Suggested dilution	Recommended dilution
WB	1:1000
ICC/IF	1:10-1:50
IHC-P	1:50-1:100
FCM	1:10-1:50

Not tested in other applications.

**Calculated MW** 34 kDa. ( [Note](#) )

## Properties

<b>Form</b>	Liquid
<b>Buffer</b>	PBS
<b>Preservative</b>	0.09% Sodium azide
<b>Storage</b>	Store as concentrated solution. Centrifuge briefly prior to opening vial. For short-term storage (1-2 weeks), store at 4°C. For long-term storage, aliquot and store at -20°C or below. Avoid multiple freeze-thaw cycles.
<b>Concentration</b>	Batch dependent (Please refer to the vial label for the specific concentration.)
<b>Immunogen</b>	KLH conjugated synthetic peptide between 241-270 amino acids from the C-terminal region of human CD38.
<b>Purification</b>	Saturated Ammonium Sulfate (SAS) precipitation followed by dialysis against PBS.
<b>Conjugation</b>	Unconjugated

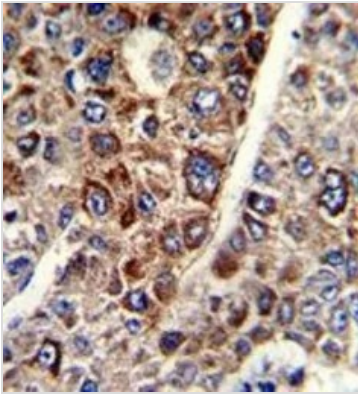
## Note

For laboratory research use only. Not for any clinical, therapeutic, or diagnostic use in humans or animals. Not for animal or human consumption.

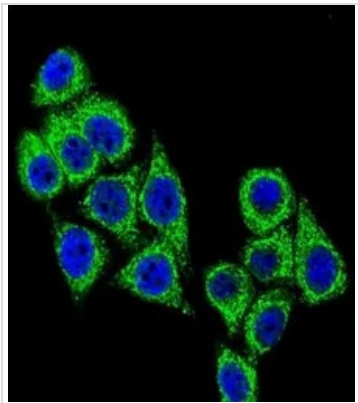
Purchasers shall not, and agree not to enable third parties to, analyze, copy, reverse engineer or otherwise attempt to determine the structure or sequence of the product.



For full product information, images and publications, please visit our [website](#).

**DATA IMAGES**

**GTx81962 IHC-P Image**

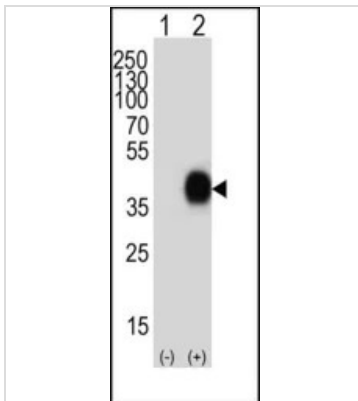
IHC-P analysis of human hepatocarcinoma using GTx81962 CD38 antibody, C-term.


**GTx81962 ICC/IF Image**

ICC/IF analysis of HeLa cells using GTx81962 CD38 antibody, C-term.

Green : CD38

Blue : DAPI


**GTx81962 WB Image**

WB analysis of 293 cell lysate (2 ug/lane) either nontransfected (Lane 1) or transiently transfected with the CD38 (Lane 2) using GTx81962 CD38 antibody, C-term.

Loading : 20ug

Dilution : 1:1000



For full product information, images and publications, please visit our [website](https://www.genetex.com).