

Syntaxin 3 antibody, Internal

Cat. No. GTX82488

| | |
|---------------------|------------|
| Host | Rabbit |
| Clonality | Polyclonal |
| Isotype | IgG |
| Applications | WB, IHC-P |
| Reactivity | Human |

Package
400 µl

Applications

Application Note

*Optimal dilutions/concentrations should be determined by the researcher.

| Suggested dilution | Recommended dilution |
|--------------------|----------------------|
| WB | 1:1000 |
| IHC-P | 1:50-1:100 |

Not tested in other applications.

Calculated MW 33 kDa. ([Note](#))

Properties

| | |
|----------------------|--|
| Form | Liquid |
| Buffer | PBS |
| Preservative | 0.09% Sodium azide |
| Storage | Store as concentrated solution. Centrifuge briefly prior to opening vial. For short-term storage (1-2 weeks), store at 4°C. For long-term storage, aliquot and store at -20°C or below. Avoid multiple freeze-thaw cycles. |
| Concentration | Batch dependent (Please refer to the vial label for the specific concentration.) |
| Immunogen | KLH conjugated synthetic peptide between 178-205 amino acids from the Central region of human STX3. |
| Purification | Saturated Ammonium Sulfate (SAS) precipitation followed by dialysis against PBS. |
| Conjugation | Unconjugated |

Note

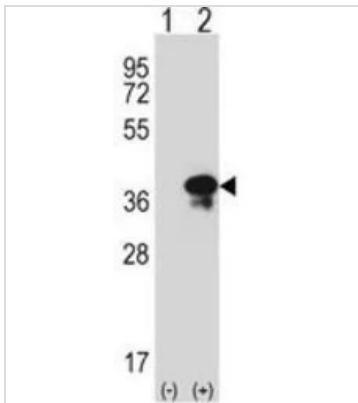
For laboratory research use only. Not for any clinical, therapeutic, or diagnostic use in humans or animals. Not for animal or human consumption.

Purchasers shall not, and agree not to enable third parties to, analyze, copy, reverse engineer or otherwise attempt to determine the structure or sequence of the product.



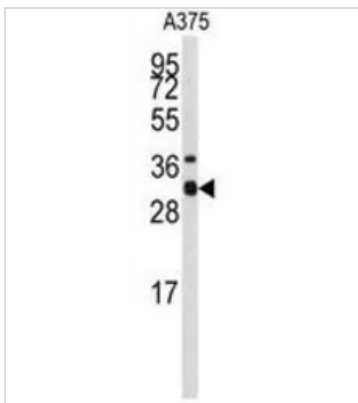
For full product information, images and publications, please visit our [website](#).

DATA IMAGES



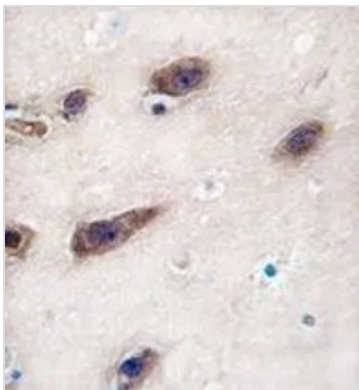
GTx82488 WB Image

WB analysis of 293 cell lysate (2 ug/lane) either nontransfected (Lane 1) or transiently transfected with the Syntaxin 3 (Lane 2) using GTx82488 Syntaxin 3 antibody, Internal.



GTx82488 WB Image

WB analysis of A375 cell lysate (35ug/lane) using GTx82488 Syntaxin 3 antibody, Internal.



GTx82488 IHC-P Image

IHC-P analysis of human brain tissue using GTx82488 Syntaxin 3 antibody, Internal.



For full product information, images and publications, please visit our [website](https://www.genetex.com).