

SC35 antibody, N-term

Cat. No. GTX82501

Host	Rabbit
Clonality	Polyclonal
Isotype	IgG
Applications	WB, IHC-P
Reactivity	Human

Package
400 µl

Applications

Application Note

*Optimal dilutions/concentrations should be determined by the researcher.

Suggested dilution	Recommended dilution
WB	1:1000
IHC-P	1:50-1:100

Not tested in other applications.

Calculated MW 25 kDa. ([Note](#))

Properties

Form	Liquid
Buffer	PBS
Preservative	0.09% Sodium azide
Storage	Store as concentrated solution. Centrifuge briefly prior to opening vial. For short-term storage (1-2 weeks), store at 4°C. For long-term storage, aliquot and store at -20°C or below. Avoid multiple freeze-thaw cycles.
Concentration	Batch dependent (Please refer to the vial label for the specific concentration.)
Immunogen	KLH conjugated synthetic peptide between 9-39 amino acids from the N-terminal region of human SFRS2.
Purification	Saturated Ammonium Sulfate (SAS) precipitation followed by dialysis against PBS.
Conjugation	Unconjugated

Note

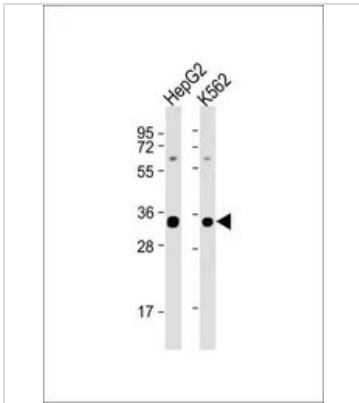
For laboratory research use only. Not for any clinical, therapeutic, or diagnostic use in humans or animals. Not for animal or human consumption.

Purchasers shall not, and agree not to enable third parties to, analyze, copy, reverse engineer or otherwise attempt to determine the structure or sequence of the product.



For full product information, images and publications, please visit our [website](#).

DATA IMAGES



GTx82501 WB Image

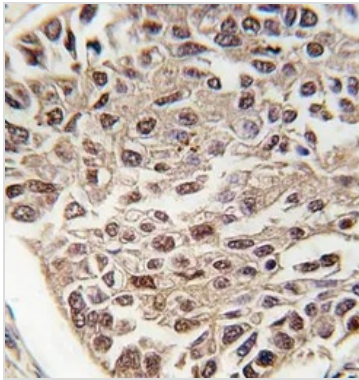
WB analysis of various samples using GTx82501 SC35 antibody, N-term.

Lane 1: HepG2 whole cell lysate

Lane 2: K562 whole cell lysate

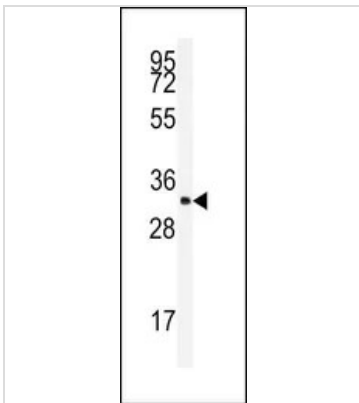
Loading : 20 µg per lane

Dilution : 1:4000



GTx82501 IHC-P Image

IHC-P analysis of human lung carcinoma using GTx82501 SC35 antibody, N-term.



GTx82501 WB Image

WB analysis of K562 cell lysate (35ug/lane) using GTx82501 SC35 antibody, N-term.



For full product information, images and publications, please visit our [website](https://www.genetex.com).