

EZH2 antibody

Cat. No. GTX82503

Host	Rabbit
Clonality	Polyclonal
Isotype	IgG
Applications	WB, ICC/IF, IHC-P, FCM
Reactivity	Human, Mouse

References (5)

Package

400 µl

Applications

Application Note

*Optimal dilutions/concentrations should be determined by the researcher.

Suggested dilution	Recommended dilution
WB	1:1000
ICC/IF	1:25
IHC-P	Assay dependent
FCM	1:25

Not tested in other applications.

Calculated MW 85 kDa. ([Note](#))

Properties

Form	Liquid
Buffer	PBS
Preservative	0.09% Sodium azide
Storage	Store as concentrated solution. Centrifuge briefly prior to opening vial. For short-term storage (1-2 weeks), store at 4°C. For long-term storage, aliquot and store at -20°C or below. Avoid multiple freeze-thaw cycles.
Concentration	Batch dependent (Please refer to the vial label for the specific concentration.)
Immunogen	This EZH2 antibody is generated from rabbits immunized with a recombinant fragment (N-term) protein from human EZH2.
Purification	Protein A purified, followed by peptide affinity purification.
Conjugation	Unconjugated

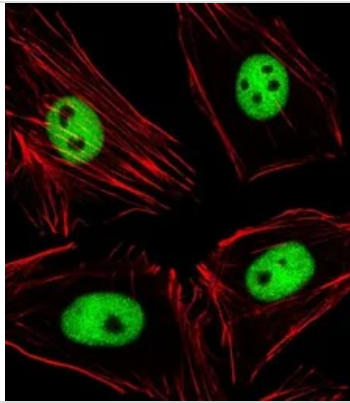
Note

For laboratory research use only. Not for any clinical, therapeutic, or diagnostic use in humans or animals. Not for animal or human consumption.

Purchasers shall not, and agree not to enable third parties to, analyze, copy, reverse engineer or otherwise attempt to determine the structure or sequence of the product.



For full product information, images and publications, please visit our [website](#).

DATA IMAGES

GTX82503 ICC/IF Image

ICC/IF analysis of HeLa cells using GTX82503 EZH2 antibody.

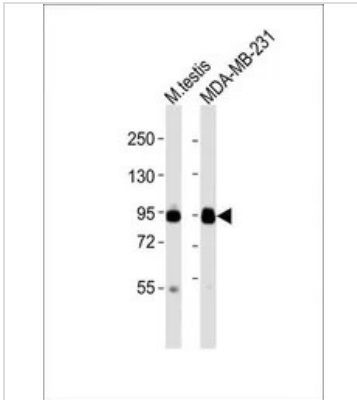
Green : EZH2

Red : Actin filament

Fixation : 4% paraformaldehyde (PFA)

Permeabilization : Triton X-100 (0.1%, 10 min)

Dilution : 1:25


GTX82503 WB Image

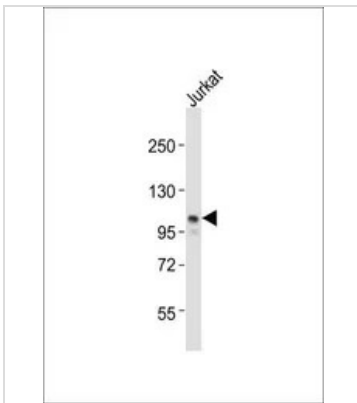
WB analysis of various samples using GTX82503 EZH2 antibody.

Lane 1: mouse testis lysates

Lane 2: MDA-MB-231 whole cell lysates

Loading : 20 µg per lane

Dilution : 1:2000


GTX82503 WB Image

WB analysis of Jurkat whole cell lysate using GTX82503 EZH2 antibody.

Loading : 20 µg per lane

Dilution : 1:2000



For full product information, images and publications, please visit our [website](https://www.genetex.com).