

## ZFP219 antibody, N-term

**Cat. No. GTX82519**

|                     |            |
|---------------------|------------|
| <b>Host</b>         | Rabbit     |
| <b>Clonality</b>    | Polyclonal |
| <b>Isotype</b>      | IgG        |
| <b>Applications</b> | WB, IHC-P  |
| <b>Reactivity</b>   | Human      |

Package  
400 µl

## Applications

**Application Note**

\*Optimal dilutions/concentrations should be determined by the researcher.

| Suggested dilution | Recommended dilution |
|--------------------|----------------------|
| WB                 | 1:1000               |
| IHC-P              | 1:10-1:50            |

Not tested in other applications.

**Calculated MW** 77 kDa. ([Note](#))

## Properties

|                      |  |
|----------------------|--|
| <b>Form</b>          | Liquid   |
| <b>Buffer</b>        | PBS  |
| <b>Preservative</b>  | 0.09% Sodium azide   |
| <b>Storage</b>       | Store as concentrated solution. Centrifuge briefly prior to opening vial. For short-term storage (1-2 weeks), store at 4°C. For long-term storage, aliquot and store at -20°C or below. Avoid multiple freeze-thaw cycles. |
| <b>Concentration</b> | Batch dependent (Please refer to the vial label for the specific concentration.)   |
| <b>Immunogen</b>     | KLH conjugated synthetic peptide between 154-183 amino acids from the N-terminal region of human ZFP219.   |
| <b>Purification</b>  | Protein A purified, followed by peptide affinity purification.   |
| <b>Conjugation</b>   | Unconjugated   |

**Note**

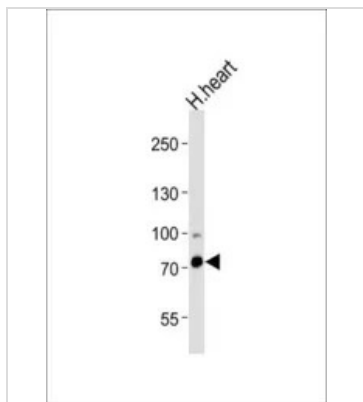
For laboratory research use only. Not for any clinical, therapeutic, or diagnostic use in humans or animals. Not for animal or human consumption.

Purchasers shall not, and agree not to enable third parties to, analyze, copy, reverse engineer or otherwise attempt to determine the structure or sequence of the product.



For full product information, images and publications, please visit our [website](#).

DATA IMAGES

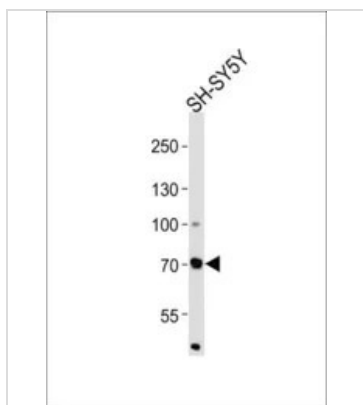


**GTX82519 WB Image**

WB analysis of human heart tissue using GTX82519 ZNF219 antibody, N-term.

Loading : 35ug

Dilution : 1:1000

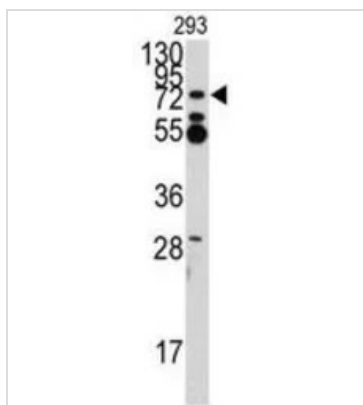


**GTX82519 WB Image**

WB analysis of SH-SY5Y cell lysate using GTX82519 ZNF219 antibody, N-term.

Loading : 35ug

Dilution : 1:1000



**GTX82519 WB Image**

WB analysis of 293 cell lysate (35ug/lane) using GTX82519 ZNF219 antibody, N-term.



For full product information, images and publications, please visit our [website](#).