

eIF4E antibody

Cat. No. GTX82525

Host	Rabbit
Clonality	Polyclonal
Isotype	IgG
Applications	WB, IHC-P, FCM
Reactivity	Human, Squirrel

References (1)

Package

400 µl

Applications

Application Note

*Optimal dilutions/concentrations should be determined by the researcher.

Suggested dilution	Recommended dilution
WB	1:1000
IHC-P	1:50-1:100
FCM	1:10-1:50

Not tested in other applications.

Calculated MW 25 kDa. ([Note](#))

Properties

Form	Liquid
Buffer	PBS
Preservative	0.09% Sodium azide
Storage	Store as concentrated solution. Centrifuge briefly prior to opening vial. For short-term storage (1-2 weeks), store at 4°C. For long-term storage, aliquot and store at -20°C or below. Avoid multiple freeze-thaw cycles.
Concentration	Batch dependent (Please refer to the vial label for the specific concentration.)
Immunogen	This EIF4E antibody is generated from rabbits immunized with a recombinant protein from human VGFR2.
Purification	Protein A purified, followed by peptide affinity purification.
Conjugation	Unconjugated

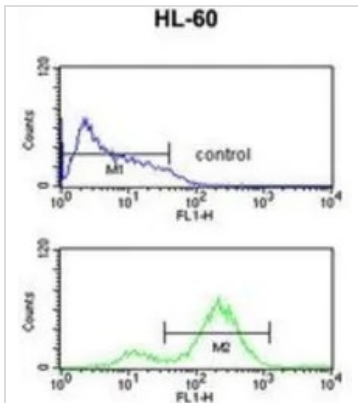
Note

For laboratory research use only. Not for any clinical, therapeutic, or diagnostic use in humans or animals. Not for animal or human consumption.

Purchasers shall not, and agree not to enable third parties to, analyze, copy, reverse engineer or otherwise attempt to determine the structure or sequence of the product.



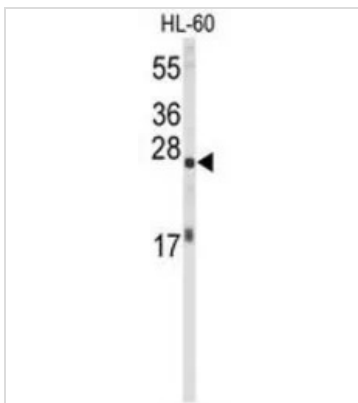
For full product information, images and publications, please visit our [website](#).

DATA IMAGES

GTX82525 FCM Image

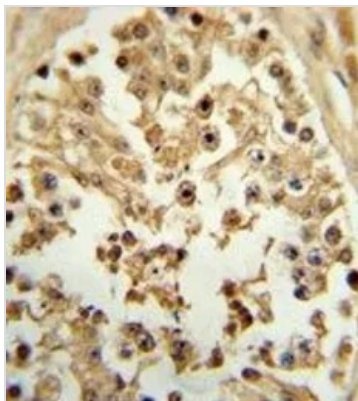
FACS analysis of HL-60 cells using GTX82525 eIF4E antibody.

Top histogram : negative control

Bottom histogram : HL-60 cells


GTX82525 WB Image

WB analysis of HL-60 cell lysate (35ug/lane) using GTX82525 eIF4E antibody.


GTX82525 IHC-P Image

IHC-P analysis of human testis tissue using GTX82525 eIF4E antibody.



For full product information, images and publications, please visit our [website](http://www.genetex.com).