

Actin antibody [BA3R]

Cat. No. GTX82559

Host	Mouse
Clonality	Monoclonal
Isotype	IgG2b
Applications	WB, ICC/IF, ELISA, IHC
Reactivity	Human, Mouse, Rat, Rabbit, Chicken

References (2)

Package

100 µg

Applications

Application Note

Recommended Starting Dilutions:

WB (with ECL): Use at a dilution of 1:1000-10000

Immunostaining: Use at a dilution of 1:500 - 1:2000

For best results with other assays (e.g.: Dot, ELISA, IP, etc), please determine optimal working dilution by titration test

Product Note Recognizes native and denatured forms of β -Actin (~42kDa)

Properties

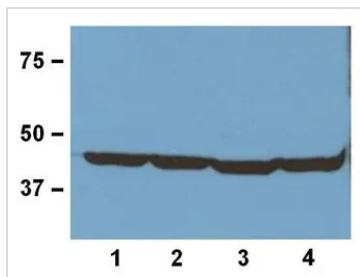
Form	Liquid
Buffer	PBS
Preservative	No preservatives
Storage	Store as concentrated solution. Centrifuge briefly prior to opening vial. For short-term storage (1-2 weeks), store at 4°C. For long-term storage, aliquot and store at -20°C or below. Avoid multiple freeze-thaw cycles.
Concentration	1 mg/ml (Please refer to the vial label for the specific concentration.)
Immunogen	β -Actin N-terminal peptide-KLH conjugates
Purification	Protein A purified
Conjugation	Unconjugated

Note

For laboratory research use only. Not for any clinical, therapeutic, or diagnostic use in humans or animals. Not for animal or human consumption.

Purchasers shall not, and agree not to enable third parties to, analyze, copy, reverse engineer or otherwise attempt to determine the structure or sequence of the product.

For full product information, images and publications, please visit our [website](#).

DATA IMAGES

GTX82559 WB Image

1:1000 (1 μ g/mL) Ab dilution used in WB of 20 μ g/lane tissue lysates from human (1), mouse (2), rat (3), and rabbit (4)



For full product information, images and publications, please visit our [website](https://www.genetex.com).