

RFP antibody [RF5R]

Cat. No. GTX82561

Host	Mouse
Clonality	Monoclonal
Isotype	IgG1
Applications	WB, IHC-P, IHC-Fr, IP, Dot, ELISA, Immunostaining
Reactivity	Species independent

References (5)

Package

100 µg

Applications

Application Note

Recommended Starting Dilutions:

WB (with ECL): Use at a dilution of 1:1000-3000

Immunostaining: Use at a dilution of 1:500 - 1:2000

For best results with other assays (e.g.: Dot, ELISA, IP, etc), please determine optimal working dilution by titration test

Calculated MW 27 kDa. ([Note](#))**Product Note** Recognizes native and denatured forms of RFP and its variants: TagRFP, TurboRFP, dsRed, mCherry, mOrange, tdTomato, etc.

Properties

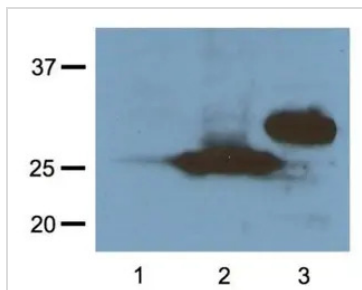
Form Liquid**Buffer** PBS**Preservative** No preservatives**Storage** Store as concentrated solution. Centrifuge briefly prior to opening vial. For short-term storage (1-2 weeks), store at 4°C. For long-term storage, aliquot and store at -20°C or below. Avoid multiple freeze-thaw cycles.**Concentration** 1 mg/ml (Please refer to the vial label for the specific concentration.)**Immunogen** RFP from the Discosoma sea anemone N-terminal peptide-KLH conjugates**Purification** Protein A purified**Conjugation** Unconjugated**Note**

For laboratory research use only. Not for any clinical, therapeutic, or diagnostic use in humans or animals. Not for animal or human consumption.

Purchasers shall not, and agree not to enable third parties to, analyze, copy, reverse engineer or otherwise attempt to determine the structure or sequence of the product.

For full product information, images and publications, please visit our [website](#).

DATA IMAGES



GTx82561 WB Image

1:1000 (1µg/mL) Ab dilution probed against HEK293 cells transfected with RFP-tagged protein vector; untransfected control (1), transfected with Turbo-RFP (2), and transfected with DsRed (3)



For full product information, images and publications, please visit our [website](#).