

GFP antibody [GF28R]

Cat. No. GTX82564

Host	Mouse
Clonality	Monoclonal
Isotype	IgG1
Applications	WB, ICC/IF, IP, ELISA
Reactivity	Species independent

Package
100 µg

Applications

Application Note

Recommended Starting Dilutions:

WB (with ECL): Use at a dilution of 1:1000-3000

Immunostaining: Use at a dilution of 1:500 - 1:2000

For best results with other assays (e.g.: Dot, ELISA, IP, etc), please determine optimal working dilution by titration test

Product Note Recognizes native and denatured forms of GFP and its variants such as: EGFP, YFP, EYFP, and CFP

Properties

Form	Liquid
Buffer	PBS
Preservative	No preservatives
Storage	Store as concentrated solution. Centrifuge briefly prior to opening vial. For short-term storage (1-2 weeks), store at 4°C. For long-term storage, aliquot and store at -20°C or below. Avoid multiple freeze-thaw cycles.
Concentration	1 mg/ml (Please refer to the vial label for the specific concentration.)
Immunogen	GFP from the jellyfish Aequorea Victoria N-terminal peptide-KLH conjugates
Purification	Protein A purified
Conjugation	Unconjugated

Note

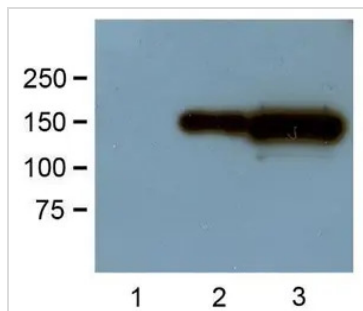
For laboratory research use only. Not for any clinical, therapeutic, or diagnostic use in humans or animals. Not for animal or human consumption.

Purchasers shall not, and agree not to enable third parties to, analyze, copy, reverse engineer or otherwise attempt to determine the structure or sequence of the product.



For full product information, images and publications, please visit our [website](#).

DATA IMAGES



GTx82564 WB Image

1:1000 (1µg/mL) Ab dilution probed against HEK293 cells transfected with GFP-tagged protein vector:
untransfected control (1), 1µg (2) and 10µg (3) of cell lysates used



For full product information, images and publications, please visit our [website](https://www.genetex.com).