

PGP9.5 antibody

Cat. No. GTX82567

Host	Chicken
Clonality	Polyclonal
Isotype	IgY
Applications	WB, ICC/IF
Reactivity	Human, Rat

References (1)

Package

100 µl

Applications

Application Note

*Optimal dilutions/concentrations should be determined by the researcher.

Suggested dilution	Recommended dilution
WB	Assay dependent
ICC/IF	Assay dependent

Not tested in other applications.

Calculated MW 25 kDa. ([Note](#))

Properties

Form	Liquid
Preservative	10mM Sodium azide
Storage	Store as concentrated solution. Centrifuge briefly prior to opening vial. For short-term storage (1-2 weeks), store at 4°C. For long-term storage, aliquot and store at -20°C or below. Avoid multiple freeze-thaw cycles.
Concentration	Batch dependent (Please refer to the vial label for the specific concentration.)
Immunogen	Recombinant full length human UCHL1 purified from E. coli
Purification	Total IgY fraction
Conjugation	Unconjugated

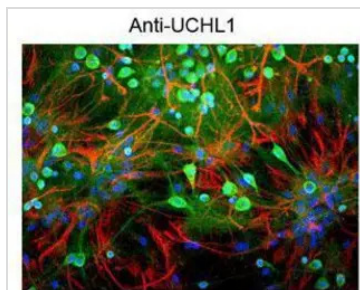
Note

For laboratory research use only. Not for any clinical, therapeutic, or diagnostic use in humans or animals. Not for animal or human consumption.

Purchasers shall not, and agree not to enable third parties to, analyze, copy, reverse engineer or otherwise attempt to determine the structure or sequence of the product.



For full product information, images and publications, please visit our [website](#).

DATA IMAGES

GTX82567 ICC/IF Image

Immunostaining of cultured neurons with chicken anti-human UCHL1 (green) and rabbit anti-GFAP (red).



For full product information, images and publications, please visit our [website](#).