

PGP9.5 antibody [BH7]

Cat. No. GTX82568

Host	Mouse
Clonality	Monoclonal
Isotype	IgG1
Applications	WB, IHC-Fr
Reactivity	Human, Mouse, Rat, Bovine

Package
100 µl

Applications

Application Note

*Optimal dilutions/concentrations should be determined by the researcher.

Suggested dilution	Recommended dilution
WB	Assay dependent
IHC-Fr	Assay dependent

Not tested in other applications.

Calculated MW 25 kDa. ([Note](#))

Properties

Form	Liquid
Buffer	PBS
Preservative	10mM Sodium azide
Storage	Store as concentrated solution. Centrifuge briefly prior to opening vial. For short-term storage (1-2 weeks), store at 4°C. For long-term storage, aliquot and store at -20°C or below. Avoid multiple freeze-thaw cycles.
Concentration	Batch dependent (Please refer to the vial label for the specific concentration.)
Immunogen	Recombinant full length human UCHL1 purified from E. coli
Purification	Protein G purified
Conjugation	Unconjugated

Note

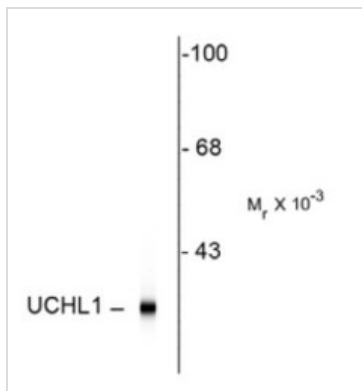
For laboratory research use only. Not for any clinical, therapeutic, or diagnostic use in humans or animals. Not for animal or human consumption.

Purchasers shall not, and agree not to enable third parties to, analyze, copy, reverse engineer or otherwise attempt to determine the structure or sequence of the product.



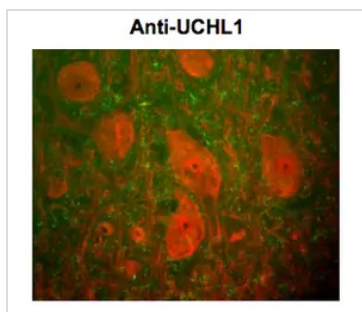
For full product information, images and publications, please visit our [website](#).

DATA IMAGES



GTX82568 WB Image

Western blot of rat hippocampal homogenate showing specific immunolabeling of the ~ 24k UCHL1 protein using UCHL1 antibody [BH7] (GTX82568)



GTX82568 IHC-Fr Image

IHC-Fr analysis of rat spinal cord tissue using GTX82568 PGP9.5 antibody [BH7].

Red: primary antibody

Green: anti-neurofilament NF-H antibody



For full product information, images and publications, please visit our [website](#).