

## TPH1 (phospho Ser260) antibody

**Cat. No. GTX82573**

<b>Host</b>	Rabbit
<b>Clonality</b>	Polyclonal
<b>Isotype</b>	IgG
<b>Applications</b>	WB
<b>Reactivity</b>	Human, Rat

**Package**  
100 µl

## Applications

**Application Note**

\*Optimal dilutions/concentrations should be determined by the researcher.

Suggested dilution	Recommended dilution
WB	Assay dependent

Not tested in other applications.

**Calculated MW** 51 kDa. ([Note](#))

## Properties

<b>Form</b>	Liquid
<b>Buffer</b>	10mM HEPES, 150mM NaCl, 0.01% BSA, 50% Glycerol
<b>Preservative</b>	No preservatives
<b>Storage</b>	Store as concentrated solution. Centrifuge briefly prior to opening vial. For short-term storage (1-2 weeks), store at 4°C. For long-term storage, aliquot and store at -20°C or below. Avoid multiple freeze-thaw cycles.
<b>Concentration</b>	Batch dependent (Please refer to the vial label for the specific concentration.)
<b>Immunogen</b>	Synthetic phospho-peptide corresponding to amino acid residues surrounding Ser260 conjugated to KLH.
<b>Purification</b>	Affinity Purified
<b>Conjugation</b>	Unconjugated

**Note**

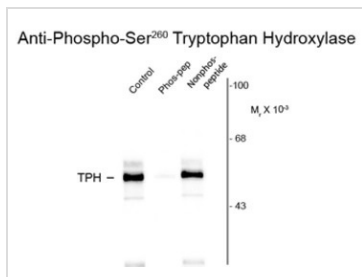
For laboratory research use only. Not for any clinical, therapeutic, or diagnostic use in humans or animals. Not for animal or human consumption.

Purchasers shall not, and agree not to enable third parties to, analyze, copy, reverse engineer or otherwise attempt to determine the structure or sequence of the product.



For full product information, images and publications, please visit our [website](#).

## DATA IMAGES

**GTX82573 WB Image**

Western blot of rat brainstem lysate showing specific immunolabeling of the ~55k TPH protein phosphorylated at Ser260 using TPH1 (phospho Ser260) antibody (GTX82573). The labeling is specifically blocked by the phosphopeptide (Phos-pep) used as antigen. The corresponding non-phosphopeptide (Nonphos-pep) did not block the immunolabeling.



For full product information, images and publications, please visit our [website](#).