

TAOK2 (phospho Ser181) antibody

Cat. No. GTX82581

Host	Rabbit
Clonality	Polyclonal
Isotype	IgG
Applications	WB
Reactivity	Human, Mouse, Rat

[References \(1 \)](#)

[Package](#)

100 µl

Applications

Application Note

For WB: Use at a dilution of 1:1000. Optimal dilutions should be determined experimentally by the end user.

Calculated MW 138 kDa. ([Note](#))

Properties

Form	Liquid
Buffer	10mM HEPES, 150mM NaCl, 0.01% BSA, 50% Glycerol
Preservative	No preservatives
Storage	Store as concentrated solution. Centrifuge briefly prior to opening vial. For short-term storage (1-2 weeks), store at 4°C. For long-term storage, aliquot and store at -20°C or below. Avoid multiple freeze-thaw cycles.
Concentration	Batch dependent (Please refer to the vial label for the specific concentration.)
Immunogen	Synthetic phospho-peptide corresponding to amino acid residues surrounding Ser181 conjugated to KLH
Purification	Affinity Purified
Conjugation	Unconjugated

Note

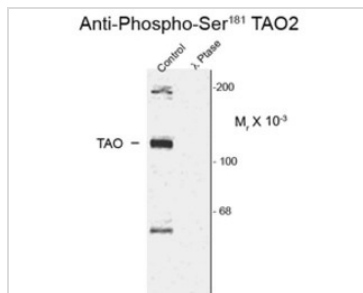
For laboratory research use only. Not for any clinical, therapeutic, or diagnostic use in humans or animals. Not for animal or human consumption.

Purchasers shall not, and agree not to enable third parties to, analyze, copy, reverse engineer or otherwise attempt to determine the structure or sequence of the product.



For full product information, images and publications, please visit our [website](#).

DATA IMAGES



GTX82581 WB Image

Western blot of rat cortex lysate showing specific immunolabeling of the ~120k TAO2 phosphorylated at Ser181 (Control). The phosphospecificity of this labeling is shown in the second lane (lambda-phosphatase: λ-Ptase).



For full product information, images and publications, please visit our [website](#).