

## Syntaxin antibody [SP8]

**Cat. No. GTX82582**

<b>Host</b>	Mouse
<b>Clonality</b>	Monoclonal
<b>Isotype</b>	IgG1
<b>Applications</b>	WB, IHC (Formalin)
<b>Reactivity</b>	Human, Mouse, Rat, Hamster, Pig

References ( 1 )

Package

100 µl

## Applications

**Application Note**

Recommended Starting Dilutions: For WB: Use at a dilution of 1:1000. For IHC-F: Use at a dilution of 1:100. Optimal dilutions should be determined experimentally by the end user.

**Calculated MW** 36 kDa. ( [Note](#) )

## Properties

<b>Form</b>	Liquid
<b>Buffer</b>	10mM HEPES, 150mM NaCl, 0.01% BSA, 50% Glycerol
<b>Preservative</b>	No preservatives
<b>Storage</b>	Store as concentrated solution. Centrifuge briefly prior to opening vial. For short-term storage (1-2 weeks), store at 4°C. For long-term storage, aliquot and store at -20°C or below. Avoid multiple freeze-thaw cycles.
<b>Concentration</b>	Batch dependent (Please refer to the vial label for the specific concentration.)
<b>Immunogen</b>	Synaptic immunoprecipitate (crude) from human brain
<b>Purification</b>	Protein G purified
<b>Conjugation</b>	Unconjugated

**Note**

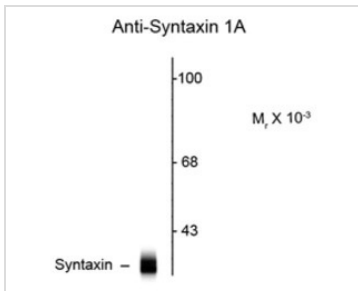
For laboratory research use only. Not for any clinical, therapeutic, or diagnostic use in humans or animals. Not for animal or human consumption.

Purchasers shall not, and agree not to enable third parties to, analyze, copy, reverse engineer or otherwise attempt to determine the structure or sequence of the product.



For full product information, images and publications, please visit our [website](#).

## DATA IMAGES

**GTX82582 WB Image**

Western blot of rat cortex lysate showing specific immunolabeling of the ~ 36k syntaxin 1A protein using Syntaxin antibody [SP8] (GTX82582).



For full product information, images and publications, please visit our [website](#).