

# Synaptotagmin 1 (phospho Ser312) + Synaptotagmin 2 (phospho Ser309) antibody

**Cat. No. GTX82583**

<b>Host</b>	Rabbit
<b>Clonality</b>	Polyclonal
<b>Isotype</b>	IgG
<b>Applications</b>	WB, IHC
<b>Reactivity</b>	Rat

**Package**

100 µl

## Applications

### Application Note

\*Optimal dilutions/concentrations should be determined by the researcher.

Suggested dilution	Recommended dilution
WB	Assay dependent
IHC	Assay dependent

Not tested in other applications.

**Calculated MW** 47 kDa. ( [Note](#) )

**Product Note** The sequence around Synaptotagmin 1 (phospho Ser312) is conserved with the sequence around Synaptotagmin 2 (phospho Ser309).

## Properties

<b>Form</b>	Liquid
<b>Buffer</b>	10mM HEPES, 150mM NaCl, 0.01% BSA, 50% Glycerol
<b>Preservative</b>	No preservatives
<b>Storage</b>	Store as concentrated solution. Centrifuge briefly prior to opening vial. For short-term storage (1-2 weeks), store at 4°C. For long-term storage, aliquot and store at -20°C or below. Avoid multiple freeze-thaw cycles.
<b>Concentration</b>	Batch dependent (Please refer to the vial label for the specific concentration.)
<b>Immunogen</b>	Synthetic phospho-peptide corresponding to amino acid residues surrounding Ser309 conjugated to KLH.
<b>Purification</b>	Affinity Purified
<b>Conjugation</b>	Unconjugated



For full product information, images and publications, please visit our [website](#).

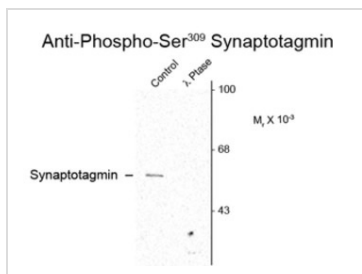
Date 2026 / 01 / 09 Page 1 of 2

For laboratory research use only. Not for any clinical, therapeutic, or diagnostic use in humans or animals. Not for animal or human consumption.

## Note

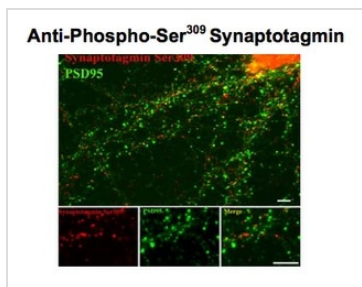
Purchasers shall not, and agree not to enable third parties to, analyze, copy, reverse engineer or otherwise attempt to determine the structure or sequence of the product.

## DATA IMAGES



### GTx82583 WB Image

Western blot of rat cortex lysate showing specific immunolabeling of the ~62k synaptotagmin phosphorylated at Ser309 (Control). Phosphospecificity is shown in the second lane (lambdaphosphatase: λ-Ptase).



### GTx82583 IHC Image

Immunostaining of 14 DIV rat cortical neurons showing synaptotagmin when phosphorylated at Ser309 in red and PSD95 in green using Synaptotagmin 1 (phospho Ser312) + Synaptotagmin 2 (phospho Ser309) antibody (GTx82583).



For full product information, images and publications, please visit our [website](https://www.genetex.com).