

Synaptobrevin antibody [SP10]

Cat. No. GTX82588

Host	Mouse
Clonality	Monoclonal
Isotype	IgM
Applications	WB, IHC
Reactivity	Human, Mouse, Rat, Rabbit, Bovine, Hamster, Pig

Package
100 µl

Applications

Application Note

*Optimal dilutions/concentrations should be determined by the researcher.

Suggested dilution	Recommended dilution
WB	Assay dependent
IHC	Assay dependent

Not tested in other applications.

Calculated MW 16 kDa. ([Note](#))

Properties

Form	Liquid
Buffer	10mM HEPES, 150mM NaCl, 0.01% BSA, 50% Glycerol
Preservative	No preservatives
Storage	Store as concentrated solution. Centrifuge briefly prior to opening vial. For short-term storage (1-2 weeks), store at 4°C. For long-term storage, aliquot and store at -20°C or below. Avoid multiple freeze-thaw cycles.
Concentration	Batch dependent (Please refer to the vial label for the specific concentration.)
Immunogen	Synaptic immunoprecipitate (crude) from human brain
Purification	IgM Purified
Conjugation	Unconjugated

Note

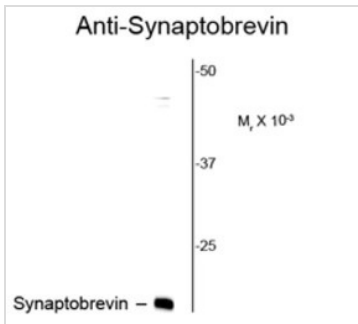
For laboratory research use only. Not for any clinical, therapeutic, or diagnostic use in humans or animals. Not for animal or human consumption.

Purchasers shall not, and agree not to enable third parties to, analyze, copy, reverse engineer or otherwise attempt to determine the structure or sequence of the product.



For full product information, images and publications, please visit our [website](#).

DATA IMAGES



GTx82588 WB Image

Western blot of rat brain lysate showing specific immunolabeling of the ~ 16k synaptobrevin protein using Synaptobrevin (VAMP) antibody [SP10] (GTx82588).



For full product information, images and publications, please visit our [website](#).