

Synapsin I (phospho Ser603) antibody

Cat. No. GTX82589

Host	Rabbit
Clonality	Polyclonal
Isotype	IgG
Applications	WB
Reactivity	Rat

References (2)
 Package
 100 µl

Applications

Application Note

*Optimal dilutions/concentrations should be determined by the researcher.

Suggested dilution	Recommended dilution
WB	Assay dependent

Not tested in other applications.

Calculated MW 75 kDa. ([Note](#))

Properties

Form	Liquid
Buffer	10mM HEPES, 150mM NaCl, 0.01% BSA, 50% Glycerol
Preservative	No preservatives
Storage	Store as concentrated solution. Centrifuge briefly prior to opening vial. For short-term storage (1-2 weeks), store at 4°C. For long-term storage, aliquot and store at -20°C or below. Avoid multiple freeze-thaw cycles.
Concentration	Batch dependent (Please refer to the vial label for the specific concentration.)
Immunogen	Synthetic phospho-peptide corresponding to amino acid residues surrounding Ser603 conjugated to KLH
Purification	Affinity Purified
Conjugation	Unconjugated

Note

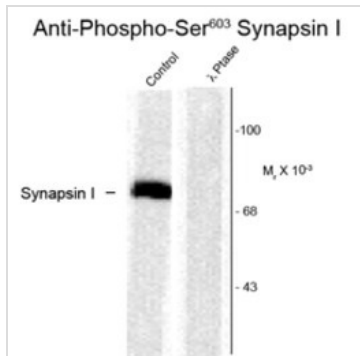
For laboratory research use only. Not for any clinical, therapeutic, or diagnostic use in humans or animals. Not for animal or human consumption.

Purchasers shall not, and agree not to enable third parties to, analyze, copy, reverse engineer or otherwise attempt to determine the structure or sequence of the product.



For full product information, images and publications, please visit our [website](#).

DATA IMAGES

**GTX82589 WB Image**

Western blot of rat cortex lysate showing specific immunolabeling of the ~78k synapsin I phosphorylated at Ser603 (Control). The phosphospecificity of this labeling is shown in the second lane (lambda-phosphatase: λ -Ptase).



For full product information, images and publications, please visit our [website](#).