

Synapsin I antibody

Cat. No. GTX82594

Host	Rabbit
Clonality	Polyclonal
Isotype	IgG
Application	WB, ICC/IF, IHC-Fr, IP, IHC
Reactivity	Human, Mouse, Rat

Reference (3)

Package

10 µg

APPLICATION

Application Note

*Optimal dilutions/concentrations should be determined by the researcher.

Suggested dilution	Recommended dilution
WB	Assay dependent
ICC/IF	Assay dependent
IHC-Fr	Assay dependent
IP	Assay dependent
IHC	Assay dependent

Not tested in other applications.

Calculated MW 75 kDa. ([Note](#))

PROPERTIES

Form	Liquid
Storage	Store as concentrated solution. Centrifuge briefly prior to opening vial. For short-term storage (1-2 weeks), store at 4°C. For long-term storage, aliquot and store at -20°C or below. Avoid multiple freeze-thaw cycles.
Concentration	Batch dependent (Please refer to the vial label for the specific concentration.)
Immunogen	Native protein purified from bovine brain
Purification	Affinity Purified
Conjugation	Unconjugated

Note

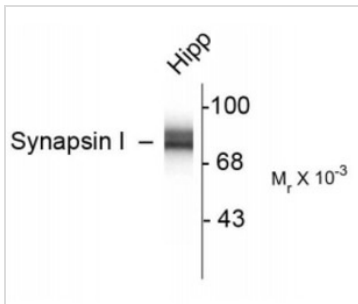
For laboratory research use only. Not for any clinical, therapeutic, or diagnostic use in humans or animals. Not for animal or human consumption.

Purchasers shall not, and agree not to enable third parties to, analyze, copy, reverse engineer or otherwise attempt to determine the structure or sequence of the product.



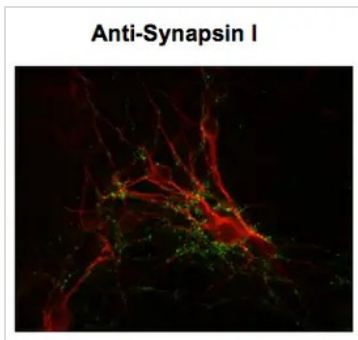
For full product information, images and publications, please visit our [website](#).

DATA IMAGES



GTx82594 WB Image

Western blot of 10 ug of rat hippocampal (Hipp) lysate showing specific immunolabeling of the ~78k synapsin I doublet protein using Synapsin I antibody (GTx82594)



GTx82594 ICC/IF Image

ICC/IF analysis of cultured mouse caudate neurons showing punctate distribution using GTx82594 Synapsin I antibody.

Green : Primary antibody

Red : MAP antibody

Dilution : 1:1000



For full product information, images and publications, please visit our [website](https://www.genetex.com).