

Kv2.2 antibody

Cat. No. GTX82610

Host	Rabbit
Clonality	Polyclonal
Isotype	IgG
Applications	WB, IHC
Reactivity	Rat

Package
100 µl

Applications

Application Note

*Optimal dilutions/concentrations should be determined by the researcher.

Suggested dilution	Recommended dilution
WB	Assay dependent
IHC	Assay dependent

Not tested in other applications.

Properties

Form	Liquid
Buffer	10mM HEPES, 150mM NaCl, 0.01% BSA, 50% Glycerol
Preservative	No preservatives
Storage	Store as concentrated solution. Centrifuge briefly prior to opening vial. For short-term storage (1-2 weeks), store at 4°C. For long-term storage, aliquot and store at -20°C or below. Avoid multiple freeze-thaw cycles.
Concentration	Batch dependent (Please refer to the vial label for the specific concentration.)
Immunogen	Synthetic peptide corresponding to amino acid residues specific to the Kv2.2 subunit conjugated to KLH
Purification	Affinity Purified
Conjugation	Unconjugated

Note

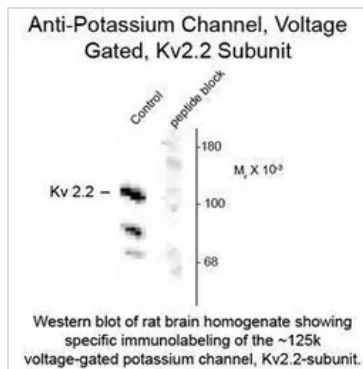
For laboratory research use only. Not for any clinical, therapeutic, or diagnostic use in humans or animals. Not for animal or human consumption.

Purchasers shall not, and agree not to enable third parties to, analyze, copy, reverse engineer or otherwise attempt to determine the structure or sequence of the product.



For full product information, images and publications, please visit our [website](#).

DATA IMAGES



GTX82610 Image



For full product information, images and publications, please visit our [website](#).