

Peripherin antibody [7C5]

Cat. No. GTX82614

Host	Mouse
Clonality	Monoclonal
Isotype	IgG1
Applications	WB, ICC/IF, IHC
Reactivity	Rat

Package
100 µl

Applications

Application Note

*Optimal dilutions/concentrations should be determined by the researcher.

Suggested dilution	Recommended dilution
WB	Assay dependent
ICC/IF	Assay dependent
IHC	Assay dependent

Not tested in other applications.

Calculated MW 57 kDa. ([Note](#))

Properties

Form	Liquid
Buffer	Concentrated culture supernatant
Preservative	10mM Sodium azide
Storage	Store as concentrated solution. Centrifuge briefly prior to opening vial. For short-term storage (1-2 weeks), store at 4°C. For long-term storage, aliquot and store at -20°C or below. Avoid multiple freeze-thaw cycles.
Concentration	Batch dependent (Please refer to the vial label for the specific concentration.)
Immunogen	Recombinant rat peripherin expressed in and purified from E. coli
Purification	Total IgG fraction
Conjugation	Unconjugated

Note

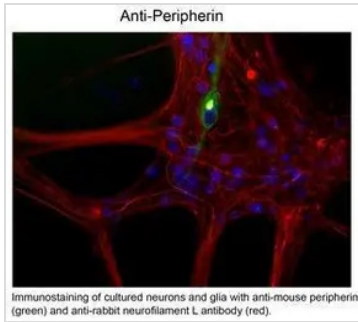
For laboratory research use only. Not for any clinical, therapeutic, or diagnostic use in humans or animals. Not for animal or human consumption.

Purchasers shall not, and agree not to enable third parties to, analyze, copy, reverse engineer or otherwise attempt to determine the structure or sequence of the product.

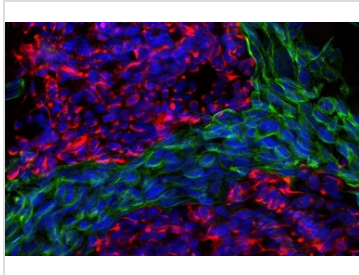


For full product information, images and publications, please visit our [website](#).

DATA IMAGES



GTX82614 IHC Image



GTX82614 ICC/IF Image

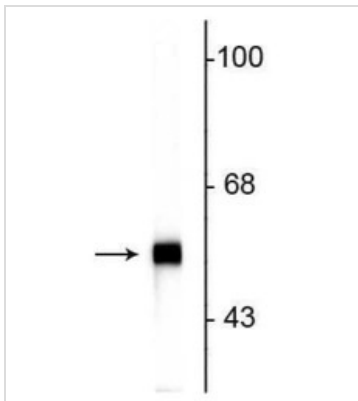
ICC/IF analysis of PC-12 cells using GTX82614 Peripherin antibody [7C5].

Red : Primary antibody

Green : Vimentin

Blue : Hoechst

Dilution : 1:500



GTX82614 WB Image

WB analysis of rat cerebellar tissue lysates using GTX82614 Peripherin antibody [7C5].



For full product information, images and publications, please visit our [website](https://www.genetex.com).