

OLIG2 antibody

Cat. No. GTX82620

Host	Rabbit
Clonality	Polyclonal
Isotype	IgG
Applications	WB, ICC/IF, IP, IHC
Reactivity	Human, Mouse, Rat

Package
100 µl

Applications

Application Note

WB 1:3,000 IHC 1:1,000 IP 1:500-1:1,000

Calculated MW 32 kDa. ([Note](#))

Properties

Form	Liquid
Buffer	200mM Tris, 100mM Glycine
Preservative	No preservatives
Storage	Store as concentrated solution. Centrifuge briefly prior to opening vial. For short-term storage (1-2 weeks), store at 4°C. For long-term storage, aliquot and store at -20°C or below. Avoid multiple freeze-thaw cycles.
Concentration	Batch dependent (Please refer to the vial label for the specific concentration.)
Immunogen	Recombinant mouse OLIG2
Purification	Protein A purified
Conjugation	Unconjugated

Note

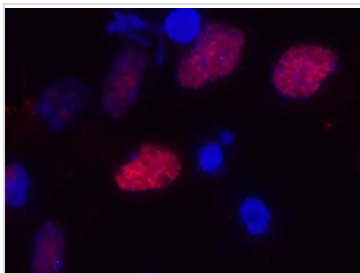
For laboratory research use only. Not for any clinical, therapeutic, or diagnostic use in humans or animals. Not for animal or human consumption.

Purchasers shall not, and agree not to enable third parties to, analyze, copy, reverse engineer or otherwise attempt to determine the structure or sequence of the product.



For full product information, images and publications, please visit our [website](#).

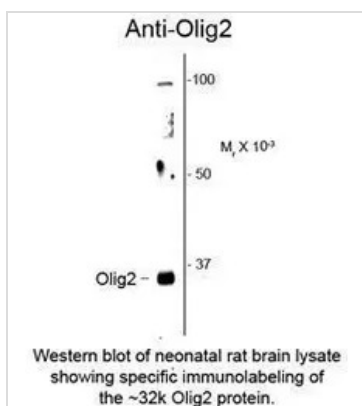
DATA IMAGES



GTX82620 ICC/IF Image

ICC/IF analysis of rat cortical neuroepithelial cells using GTX82620 OLIG2 antibody. The cells were treated with basic FGF for 30 hours prior to staining.

Red : OLIG2



GTX82620 WB Image



For full product information, images and publications, please visit our [website](#).