

## Nuclei antibody [235-1]

Cat. No. GTX82624

Host	Mouse
Clonality	Monoclonal
Isotype	IgG1
Applications	ICC/IF, IHC-P, IHC-Fr, FCM, IHC
Reactivity	Human

References ( 4 )

Package

100 µl

## Applications

## Application Note

\*Optimal dilutions/concentrations should be determined by the researcher.

Suggested dilution	Recommended dilution
ICC/IF	1:100
IHC-P	1:100
IHC-Fr	Assay dependent
FCM	Assay dependent
IHC	Assay dependent

**Note : This antibody works on acetone or PFA fixed cells. Recommended Permeabilizing the cells with 0.1-0.4% Triton X100.**

Not tested in other applications.

## Product Note

Specific for endogenous levels of human nuclear staining pattern. Chromosomes are negatively stained in metaphase cells. We do not recommend use of this product for Mouse,Rat samples.

## Properties

Form	Liquid
Buffer	Concentrated tissue culture supernatant
Preservative	No preservatives
Storage	Store as concentrated solution. Centrifuge briefly prior to opening vial. For short-term storage (1-2 weeks), store at 4°C. For long-term storage, aliquot and store at -20°C or below. Avoid multiple freeze-thaw cycles.
Concentration	Batch dependent (Please refer to the vial label for the specific concentration.)
Immunogen	Human cell homogenate.
Conjugation	Unconjugated



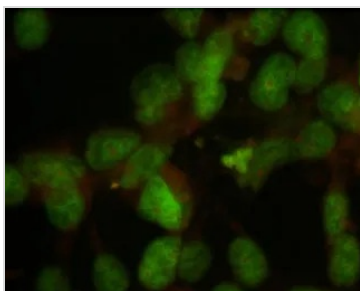
For full product information, images and publications, please visit our [website](#).

For laboratory research use only. Not for any clinical, therapeutic, or diagnostic use in humans or animals. Not for animal or human consumption.

**Note**

Purchasers shall not, and agree not to enable third parties to, analyze, copy, reverse engineer or otherwise attempt to determine the structure or sequence of the product.

## DATA IMAGES



### GTx82624 ICC/IF Image

ICC/IF analysis of HeLa cells using Nuclei antibody.



For full product information, images and publications, please visit our [website](#).