

NMDAR2A antibody

Cat. No. GTX82636

Host	Rabbit
Clonality	Polyclonal
Isotype	IgG
Applications	WB, IHC-Fr, IP
Reactivity	Human, Mouse, Rat

Package
10 µg

Applications

Application Note

*Optimal dilutions/concentrations should be determined by the researcher.

Suggested dilution	Recommended dilution
WB	1:1,000
IHC-Fr	1:1000 - 1:2000
IP	3 µl per 200 µg lysate

Not tested in other applications.

Calculated MW 165 kDa. ([Note](#))

Properties

Form	Liquid
Preservative	No preservatives
Storage	Store as concentrated solution. Centrifuge briefly prior to opening vial. For short-term storage (1-2 weeks), store at 4°C. For long-term storage, aliquot and store at -20°C or below. Avoid multiple freeze-thaw cycles.
Concentration	Batch dependent (Please refer to the vial label for the specific concentration.)
Immunogen	Fusion protein from the C-terminal region of the NR2A subunit
Purification	Affinity Purified
Conjugation	Unconjugated

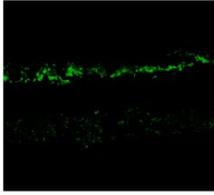
Note

For laboratory research use only. Not for any clinical, therapeutic, or diagnostic use in humans or animals. Not for animal or human consumption.

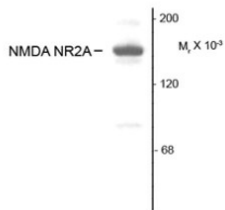
Purchasers shall not, and agree not to enable third parties to, analyze, copy, reverse engineer or otherwise attempt to determine the structure or sequence of the product.



For full product information, images and publications, please visit our [website](#).

DATA IMAGES
Anti-NMDA Receptor, NR2A Subunit

GTX82636 IHC-Fr Image

Immunostaining of rabbit retina showing NR2A in the rod and cone photoreceptors in the outer plexiform layer as well as the entire inner plexiform layer using NDMAR2A antibody (GTX82636)

Anti-NMDA Receptor, NR2A Subunit

GTX82636 WB Image

Western blot of 10 ug of rat hippocampal (Hipp) lysate showing specific immunolabeling of the ~180k NR2A subunit of the NMDA receptor using NDMAR2A antibody (GTX82636)



For full product information, images and publications, please visit our [website](#).