

## NMDAR1 (splice variant C2') antibody

Cat. No. GTX82638

Host	Rabbit
Clonality	Polyclonal
Isotype	IgG
Applications	WB, IHC
Reactivity	Human, Mouse, Rat

## Package

25 µg

## Applications

## Application Note

Optimal working dilutions should be determined experimentally by the end user.

Calculated MW 106 kDa. ( [Note](#) )

## Properties

Form	Liquid
Preservative	No preservatives
Storage	Store as concentrated solution. Centrifuge briefly prior to opening vial. For short-term storage (1-2 weeks), store at 4°C. For long-term storage, aliquot and store at -20°C or below. Avoid multiple freeze-thaw cycles.
Concentration	Batch dependent (Please refer to the vial label for the specific concentration.)
Immunogen	Synthetic peptide corresponding to amino acid residues specific to the NR1 subunit, C2' splice variant insert conjugated to KLH
Purification	Affinity Purified
Conjugation	Unconjugated

## Note

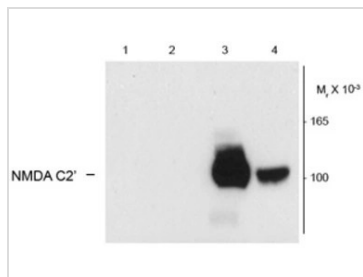
For laboratory research use only. Not for any clinical, therapeutic, or diagnostic use in humans or animals. Not for animal or human consumption.

Purchasers shall not, and agree not to enable third parties to, analyze, copy, reverse engineer or otherwise attempt to determine the structure or sequence of the product.



For full product information, images and publications, please visit our [website](#).

## DATA IMAGES



### GTx82638 WB Image

Western blot of HEK293 cells using GTx82638 expressing:

1. without NR1 expression
2. NR1 subunit containing only the C2 insert
- 3,4. NR1 subunit containing the C1/C2' and N1/C2' insert



For full product information, images and publications, please visit our [website](#).