

# NF-L antibody

**Cat. No. GTX82644**

<b>Host</b>	Chicken
<b>Clonality</b>	Polyclonal
<b>Isotype</b>	IgY
<b>Applications</b>	WB, IHC
<b>Reactivity</b>	Rat

**Package**  
100 µl

## Applications

### Application Note

Optimal working dilutions should be determined experimentally by the end user.

**Calculated MW** 62 kDa. ( [Note](#) )

## Properties

<b>Form</b>	Liquid
<b>Buffer</b>	PBS
<b>Preservative</b>	10mM Sodium azide
<b>Storage</b>	Store as concentrated solution. Centrifuge briefly prior to opening vial. For short-term storage (1-2 weeks), store at 4°C. For long-term storage, aliquot and store at -20°C or below. Avoid multiple freeze-thaw cycles.
<b>Concentration</b>	Batch dependent (Please refer to the vial label for the specific concentration.)
<b>Immunogen</b>	Preparation of bovine spinal cord NF-L
<b>Purification</b>	Total IgY fraction
<b>Conjugation</b>	Unconjugated

### Note

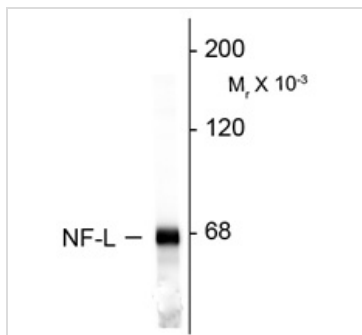
For laboratory research use only. Not for any clinical, therapeutic, or diagnostic use in humans or animals. Not for animal or human consumption.

Purchasers shall not, and agree not to enable third parties to, analyze, copy, reverse engineer or otherwise attempt to determine the structure or sequence of the product.



For full product information, images and publications, please visit our [website](#).

## DATA IMAGES



### GTX82644 WB Image

Western blot of rat cortex lysate showing specific immunolabeling of the ~68kD NF-L protein using GTX82644



For full product information, images and publications, please visit our [website](#).