

Myelin basic protein antibody

Cat. No. GTX82648

Host	Chicken
Clonality	Polyclonal
Isotype	IgY
Applications	WB, ICC/IF
Reactivity	Human, Mouse, Rat, Bovine

Package
100 µl

Applications

Application Note

Optimal working dilutions should be determined experimentally by the end user.

Calculated MW 18/22 kDa. ([Note](#))

Properties

Form	Liquid
Preservative	10mM Sodium azide
Storage	Store as concentrated solution. Centrifuge briefly prior to opening vial. For short-term storage (1-2 weeks), store at 4°C. For long-term storage, aliquot and store at -20°C or below. Avoid multiple freeze-thaw cycles.
Concentration	Batch dependent (Please refer to the vial label for the specific concentration.)
Immunogen	Three peptide sequences conserved in higher vertebrate MBP proteins
Purification	Total IgY fraction
Conjugation	Unconjugated

Note

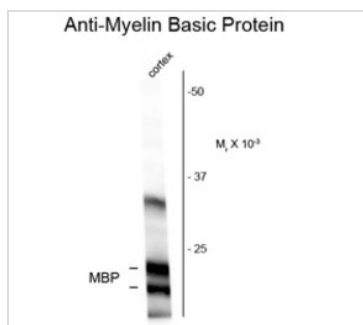
For laboratory research use only. Not for any clinical, therapeutic, or diagnostic use in humans or animals. Not for animal or human consumption.

Purchasers shall not, and agree not to enable third parties to, analyze, copy, reverse engineer or otherwise attempt to determine the structure or sequence of the product.



For full product information, images and publications, please visit our [website](#).

DATA IMAGES



GTx82648 WB Image

Western blot of rat cortex homogenate showing specific immunolabeling of the ~18 and 22k MBP protein using MBP antibody (GTx82648).



For full product information, images and publications, please visit our [website](https://www.genetex.com).