

Mitochondria antibody [113-1]

Cat. No. GTX82650

Host	Mouse
Clonality	Monoclonal
Isotype	IgG1
Applications	WB, ICC/IF, IHC
Reactivity	Human

Package
100 µl

Applications

Application Note

Recommended Starting Dilutions: For WB: Use at a dilution of 1:1000. For ICC/IF: Use at a dilution of 1:800. For IHC: Use at a dilution of 1:800. Optimal working dilutions should be determined experimentally by the end user.

Calculated MW 60 kDa. ([Note](#))

Properties

Form	Liquid
Preservative	No preservatives
Storage	Store as concentrated solution. Centrifuge briefly prior to opening vial. For short-term storage (1-2 weeks), store at 4°C. For long-term storage, aliquot and store at -20°C or below. Avoid multiple freeze-thaw cycles.
Concentration	Batch dependent (Please refer to the vial label for the specific concentration.)
Immunogen	Human cell homogenate
Purification	Total IgG fraction
Conjugation	Unconjugated

Note

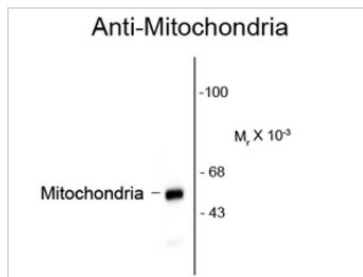
For laboratory research use only. Not for any clinical, therapeutic, or diagnostic use in humans or animals. Not for animal or human consumption.

Purchasers shall not, and agree not to enable third parties to, analyze, copy, reverse engineer or otherwise attempt to determine the structure or sequence of the product.



For full product information, images and publications, please visit our [website](#).

DATA IMAGES



GTx82650 WB Image

Western blot of HeLa lysate showing specific immunolabeling of the ~60k mitochondrial protein using Mitochondria antibody [113-1] (GTx82650).



For full product information, images and publications, please visit our [website](#).