

MAP2 antibody

Cat. No. GTX82661

Host	Chicken
Clonality	Polyclonal
Isotype	IgY
Application	WB, ICC/IF, IHC, PLA
Reactivity	Human, Mouse, Rat, Bovine

Reference (6)
Package
100 µl

APPLICATION

Application Note

*Optimal dilutions/concentrations should be determined by the researcher.

Suggested dilution	Recommended dilution
WB	1:20000
ICC/IF	1:1000-1:20000
IHC	1:2500-1:10000
PLA	Assay dependent

Not tested in other applications.

Calculated MW 200 kDa. ([Note](#))

PROPERTIES

Form	Liquid
Buffer	PBS
Preservative	10mM Sodium azide
Storage	Store as concentrated solution. Centrifuge briefly prior to opening vial. For short-term storage (1-2 weeks), store at 4°C. For long-term storage, aliquot and store at -20°C or below. Avoid multiple freeze-thaw cycles.
Concentration	Batch dependent (Please refer to the vial label for the specific concentration.)
Immunogen	Recombinant bovine MAP2 protein expressed in and purified from E. Coli.
Purification	Total IgY fraction
Conjugation	Unconjugated

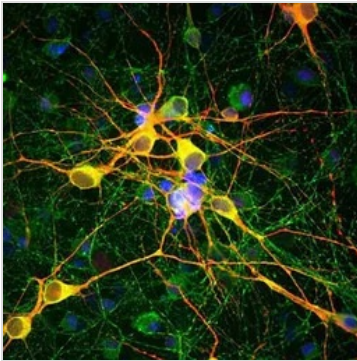
Note

For laboratory research use only. Not for any clinical, therapeutic, or diagnostic use in humans or animals. Not for animal or human consumption.

Purchasers shall not, and agree not to enable third parties to, analyze, copy, reverse engineer or otherwise attempt to determine the structure or sequence of the product.



For full product information, images and publications, please visit our [website](#).

DATA IMAGES

GTX82661 ICC/IF Image

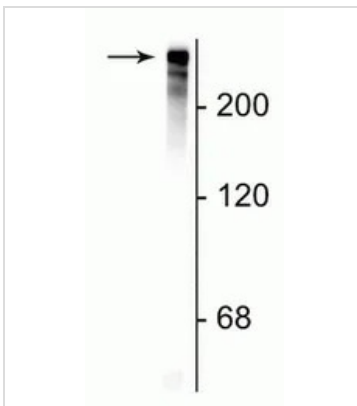
ICC/IF analysis of neuron-glia cell cultures from E20 rat using GTX82661 MAP2 antibody. The anti-MAP2 antibody stains dendrites and perikarya of neurons, while the anti-TAU antibody labels neuronal perikarya, dendrites and also axonal process. As a result perikarya and dendrites appears orange-yellow, since they contain both MAP2 and tau, while axons are green.

Red : MAP2

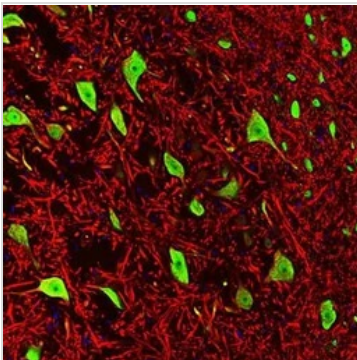
Green : Tau

Blue : DAPI

Dilution : 1:10,000


GTX82661 WB Image

WB analysis of rat cortical lysate using GTX82661 MAP2 antibody.


GTX82661 IHC Image

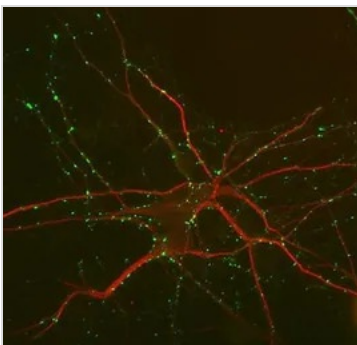
IHC analysis of rat brain stem tissue using GTX82661 MAP2 antibody. The Anti-FOX3 specifically labels the nuclei and the proximal cytoplasm of neuronal cells while the Anti-MAP2 labels dendrites and overlaps with FOX3 labeling the perikarya of neurons.

Red : MAP2

Green : FOX3

Blue : DAPI

Dilution : 1:5000


GTX82661 ICC/IF Image

ICC/IF analysis of mouse hippocampal cultures using GTX82661 MAP2 antibody.

Red : MAP2

Green : Synapsin

Blue : DAPI

Dilution : 1:1000



For full product information, images and publications, please visit our [website](https://www.genetex.com).