

# Fractin antibody

**Cat. No. GTX82694**

|                    |            |
|--------------------|------------|
| <b>Host</b>        | Rabbit     |
| <b>Clonality</b>   | Polyclonal |
| <b>Isotype</b>     | IgG        |
| <b>Application</b> | WB, IHC    |
| <b>Reactivity</b>  | Human, Rat |

**Package**  
100 µl

## APPLICATION

### Application Note

Optimal working dilutions should be determined experimentally by the end user.

**Calculated MW** 32 kDa. ( [Note](#) )

## PROPERTIES

|                     |  |
|---------------------|--|
| <b>Form</b>         | Liquid   |
| <b>Buffer</b>       | Serum  |
| <b>Preservative</b> | No preservative  |
| <b>Storage</b>      | Store as concentrated solution. Centrifuge briefly prior to opening vial. For short-term storage (1-2 weeks), store at 4°C. For long-term storage, aliquot and store at -20°C or below. Avoid multiple freeze-thaw cycles. |
| <b>Immunogen</b>    | Synthetic peptide corresponding to amino acid residues from the C terminal region of the 32-kDa actin fragment   |
| <b>Purification</b> | Neat Serum   |
| <b>Conjugation</b>  | Unconjugated   |

### Note

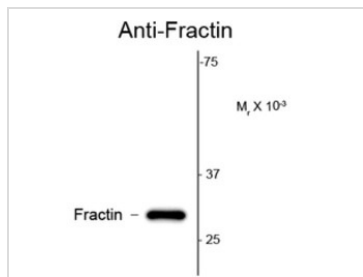
For laboratory research use only. Not for any clinical, therapeutic, or diagnostic use in humans or animals. Not for animal or human consumption.

Purchasers shall not, and agree not to enable third parties to, analyze, copy, reverse engineer or otherwise attempt to determine the structure or sequence of the product.



For full product information, images and publications, please visit our [website](#).

## DATA IMAGES



### GTx82694 WB Image

Western blot of colchicin treated with Sy5y cell lysate showing specific immunolabeling of the ~32k cleaved actin fragment (fractin) using Fractin antibody (GTx82694)



For full product information, images and publications, please visit our [website](#).