

Fibrillarin antibody [38F3]

Cat. No. GTX82695

Host	Mouse
Clonality	Monoclonal
Isotype	IgG1
Applications	WB, IHC
Reactivity	Human, Rat

References (4)

Package

100 µl

Applications

Application Note

Optimal working dilutions should be determined experimentally by the end user.

Calculated MW 34 kDa. ([Note](#))

Properties

Form	Liquid
Preservative	10mM Sodium azide
Storage	Store as concentrated solution. Centrifuge briefly prior to opening vial. For short-term storage (1-2 weeks), store at 4°C. For long-term storage, aliquot and store at -20°C or below. Avoid multiple freeze-thaw cycles.
Concentration	Batch dependent (Please refer to the vial label for the specific concentration.)
Immunogen	Yeast nuclear preparations
Purification	Total IgG fraction
Conjugation	Unconjugated

Note

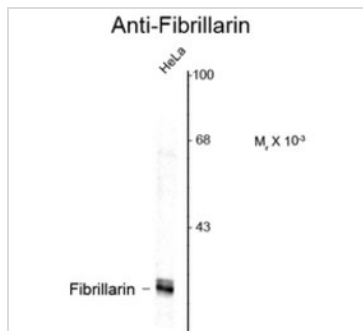
For laboratory research use only. Not for any clinical, therapeutic, or diagnostic use in humans or animals. Not for animal or human consumption.

Purchasers shall not, and agree not to enable third parties to, analyze, copy, reverse engineer or otherwise attempt to determine the structure or sequence of the product.



For full product information, images and publications, please visit our [website](#).

DATA IMAGES


GTx82695 WB Image

Western blot of HeLa lysate showing specific immunolabeling of the ~34k Fibrillarin protein using Fibrillarin antibody [38F3] (GTx82695).



For full product information, images and publications, please visit our [website](https://www.genetex.com).