

ERK1 (phospho Thr202/Tyr204) + ERK2 (phospho Thr185/Tyr187) antibody

Cat. No. GTX82696

Host	Rabbit
Clonality	Polyclonal
Isotype	IgG
Applications	WB, IHC-P, IHC-Fr
Reactivity	Human, Rat

[References \(2 \)](#)

[Package](#)

100 µl

Applications

Application Note

Optimal working dilutions should be determined experimentally by the end user.

Calculated MW 42/44 kDa. ([Note](#))

Properties

Form	Liquid
Buffer	10mM HEPES, 150mM NaCl, 0.01% BSA, 50% Glycerol
Preservative	No preservatives
Storage	Store as concentrated solution. Centrifuge briefly prior to opening vial. For short-term storage (1-2 weeks), store at 4°C. For long-term storage, aliquot and store at -20°C or below. Avoid multiple freeze-thaw cycles.
Concentration	Batch dependent (Please refer to the vial label for the specific concentration.)
Immunogen	Synthetic phospho-peptide corresponding to amino acid residues surrounding Thr202/Tyr204 conjugated to KLH.
Purification	Affinity Purified
Conjugation	Unconjugated

Note

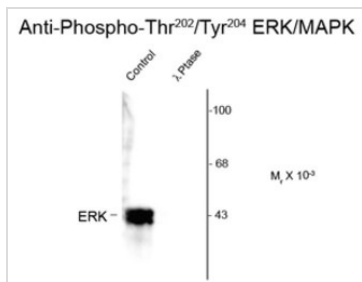
For laboratory research use only. Not for any clinical, therapeutic, or diagnostic use in humans or animals. Not for animal or human consumption.

Purchasers shall not, and agree not to enable third parties to, analyze, copy, reverse engineer or otherwise attempt to determine the structure or sequence of the product.



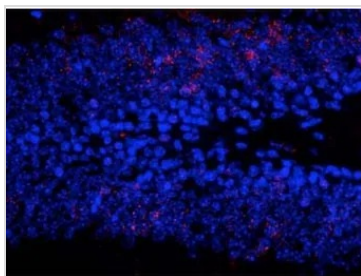
For full product information, images and publications, please visit our [website](#).

DATA IMAGES



GTx82696 WB Image

Western blot of human T47D cells showing phospho-specific immunolabeling of the ~42k-44k ERK/MAPK protein doublet using ERK/MAPK (phospho Thr202/Tyr204) antibody (GTx82696).



GTx82696 IHC-P Image

IHC-P analysis of granule cells in the dentate gyrus of saline treated mouse using ERK1/2 (phospho Thr202/Tyr204) antibody (red) and DAPI (blue).



For full product information, images and publications, please visit our [website](#).