

# Dynamin 1 (phospho Ser778) antibody

**Cat. No. GTX82702**

<b>Host</b>	Sheep
<b>Clonality</b>	Polyclonal
<b>Isotype</b>	IgG
<b>Applications</b>	WB
<b>Reactivity</b>	Rat

**Package**  
100 µl

## Applications

### Application Note

Optimal working dilutions should be determined experimentally by the end user.

**Calculated MW** 97 kDa. ( [Note](#) )

## Properties

<b>Form</b>	Liquid
<b>Buffer</b>	10mM HEPES, 150mM NaCl, 0.01% BSA, 50% Glycerol
<b>Preservative</b>	No preservative
<b>Storage</b>	Store as concentrated solution. Centrifuge briefly prior to opening vial. For short-term storage (1-2 weeks), store at 4°C. For long-term storage, aliquot and store at -20°C or below. Avoid multiple freeze-thaw cycles.
<b>Concentration</b>	Batch dependent (Please refer to the vial label for the specific concentration.)
<b>Immunogen</b>	Synthetic phospho-peptide corresponding to amino acid residues surrounding Ser778 conjugated to KLH.
<b>Purification</b>	Affinity Purified
<b>Conjugation</b>	Unconjugated

### Note

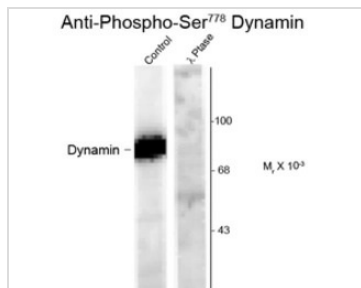
For laboratory research use only. Not for any clinical, therapeutic, or diagnostic use in humans or animals. Not for animal or human consumption.

Purchasers shall not, and agree not to enable third parties to, analyze, copy, reverse engineer or otherwise attempt to determine the structure or sequence of the product.



For full product information, images and publications, please visit our [website](#).

## DATA IMAGES



### GTX82702 WB Image

Western blot of forskolin stimulated rat hippocampal lysate showing phospho-specific immunolabeling of the ~95k Dynamin protein phosphorylated at Ser 778 using Dynamin (phospho Ser778) antibody (GTX82702).



For full product information, images and publications, please visit our [website](https://www.genetex.com).