

Glutathione S-transferase kappa 1 antibody

Cat. No. GTX82705

Host	Rabbit
Clonality	Polyclonal
Isotype	IgG
Applications	WB, ICC/IF, IHC
Reactivity	Human, Mouse

References (2)

Package

100 µl

Applications

Application Note

Optimal working dilutions should be determined experimentally by the end user.

Calculated MW 25 kDa. ([Note](#))

Properties

Form	Liquid
Buffer	Serum, 40% Glycerol
Preservative	No preservatives
Storage	Store as concentrated solution. Centrifuge briefly prior to opening vial. For short-term storage (1-2 weeks), store at 4°C. For long-term storage, aliquot and store at -20°C or below. Avoid multiple freeze-thaw cycles.
Immunogen	Full length recombinant mouse Glutathione S-transferase kappa 1 protein
Purification	Serum
Conjugation	Unconjugated

Note

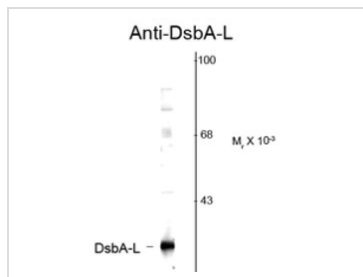
For laboratory research use only. Not for any clinical, therapeutic, or diagnostic use in humans or animals. Not for animal or human consumption.

Purchasers shall not, and agree not to enable third parties to, analyze, copy, reverse engineer or otherwise attempt to determine the structure or sequence of the product.



For full product information, images and publications, please visit our [website](#).

DATA IMAGES



GTx82705 WB Image

Western blot of mouse adipose tissue showing specific immunolabeling of the ~25k DsbA-L protein using DsbA-L antibody (GTx82705).



For full product information, images and publications, please visit our [website](#).