

Dopamine Transporter antibody, Extracellular Loop 2

Cat. No. GTX82706

| | |
|--------------|----------------|
| Host | Rabbit |
| Clonality | Polyclonal |
| Isotype | IgG |
| Applications | WB, IHC |
| Reactivity | Human, Primate |

Package
100 µl

Applications

Application Note

Recommended Starting Dilutions:For WB: 1:1,000**For IHC: 1:1,000****Optimal working dilutions should be determined experimentally by the end user.**Calculated MW 68 kDa. ([Note](#))

Properties

Form Liquid

Buffer 10mM HEPES, 150mM NaCl, 0.01% BSA, 50% Glycerol

Preservative No preservatives

Storage Store as concentrated solution. Centrifuge briefly prior to opening vial. For short-term storage (1-2 weeks), store at 4°C. For long-term storage, aliquot and store at -20°C or below. Avoid multiple freeze-thaw cycles.

Concentration Batch dependent (Please refer to the vial label for the specific concentration.)

Immunogen Synthetic peptide corresponding to amino acid residues from the extracellular loop 2 region conjugated to KLH

Purification Affinity Purified

Conjugation Unconjugated

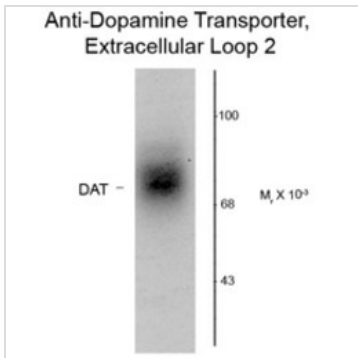
Note

For laboratory research use only. Not for any clinical, therapeutic, or diagnostic use in humans or animals. Not for animal or human consumption.

Purchasers shall not, and agree not to enable third parties to, analyze, copy, reverse engineer or otherwise attempt to determine the structure or sequence of the product.

For full product information, images and publications, please visit our [website](#).

DATA IMAGES

**GTX82706 WB Image**

Western blot of 20 ug of human caudate lysate showing specific immunolabeling of the ~88k DAT protein using Dopamine Transporter antibody, Extracellular Loop 2 (GTX82706).



For full product information, images and publications, please visit our [website](#).