

Dopamine beta Hydroxylase antibody, C-Term

Cat. No. GTX82708

Host	Sheep
Clonality	Polyclonal
Isotype	IgG
Applications	WB
Reactivity	Human, Mouse, Primate

Package
100 µl

Applications

Application Note

Optimal working dilutions should be determined experimentally by the end user.

Calculated MW 69 kDa. ([Note](#))

Properties

Form	Liquid
Buffer	10mM HEPES, 150mM NaCl, 0.01% BSA, 50% Glycerol
Preservative	No preservatives
Storage	Store as concentrated solution. Centrifuge briefly prior to opening vial. For short-term storage (1-2 weeks), store at 4°C. For long-term storage, aliquot and store at -20°C or below. Avoid multiple freeze-thaw cycles.
Concentration	Batch dependent (Please refer to the vial label for the specific concentration.)
Immunogen	Synthetic peptide corresponding to amino acid residues from the C-terminal region conjugated to KLH
Purification	Affinity Purified
Conjugation	Unconjugated

Note

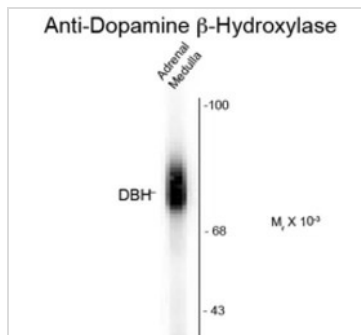
For laboratory research use only. Not for any clinical, therapeutic, or diagnostic use in humans or animals. Not for animal or human consumption.

Purchasers shall not, and agree not to enable third parties to, analyze, copy, reverse engineer or otherwise attempt to determine the structure or sequence of the product.



For full product information, images and publications, please visit our [website](#).

DATA IMAGES



GTx82708 WB Image

Western blot of 20 ug of human adrenal medulla lysate showing specific immunolabeling of the ~75k DBH protein using Dopamine α -Hydroxylase antibody, C-Term (GTx82708).



For full product information, images and publications, please visit our [website](#).