

## DOPA Decarboxylase antibody

**Cat. No. GTX82709**

<b>Host</b>	Rabbit
<b>Clonality</b>	Polyclonal
<b>Isotype</b>	IgG
<b>Applications</b>	WB
<b>Reactivity</b>	Human, Rat, Rabbit, Sheep, Bovine, Dog, Guinea pig

**Package**  
100 µl

## Applications

**Application Note**

Optimal working dilutions should be determined experimentally by the end user.

**Calculated MW** 54 kDa. ([Note](#))

## Properties

<b>Form</b>	Liquid
<b>Buffer</b>	10mM HEPES, 150mM NaCl, 0.01% BSA, 50% Glycerol
<b>Preservative</b>	No preservatives
<b>Storage</b>	Store as concentrated solution. Centrifuge briefly prior to opening vial. For short-term storage (1-2 weeks), store at 4°C. For long-term storage, aliquot and store at -20°C or below. Avoid multiple freeze-thaw cycles.
<b>Concentration</b>	Batch dependent (Please refer to the vial label for the specific concentration.)
<b>Immunogen</b>	Synthetic peptide corresponding to amino acid residues from the N-terminal region conjugated to KLH
<b>Purification</b>	Affinity Purified
<b>Conjugation</b>	Unconjugated

**Note**

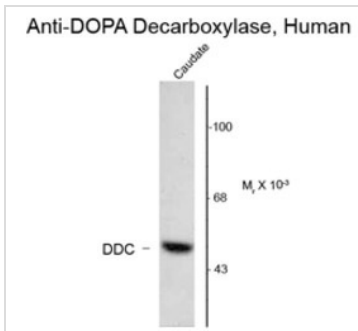
For laboratory research use only. Not for any clinical, therapeutic, or diagnostic use in humans or animals. Not for animal or human consumption.

Purchasers shall not, and agree not to enable third parties to, analyze, copy, reverse engineer or otherwise attempt to determine the structure or sequence of the product.



For full product information, images and publications, please visit our [website](#).

## DATA IMAGES

**GTX82709 WB Image**

Western blot of 20 ug of human caudate lysate showing specific immunolabeling of the ~55k DOPA Decarboxylase protein using DOPA Decarboxylase antibody (GTX82709).



For full product information, images and publications, please visit our [website](#).