

Connexin 43 (phospho Ser368) antibody

Cat. No. GTX82717

Host	Rabbit
Clonality	Polyclonal
Isotype	IgG
Applications	WB
Reactivity	Rat

Package
100 µl

Applications

Application Note

Optimal working dilutions should be determined experimentally by the end user.

Calculated MW 43 kDa. ([Note](#))

Properties

Form	Liquid
Buffer	10mM HEPES, 150mM NaCl, 0.01% BSA, 50% Glycerol
Preservative	No preservatives
Storage	Store as concentrated solution. Centrifuge briefly prior to opening vial. For short-term storage (1-2 weeks), store at 4°C. For long-term storage, aliquot and store at -20°C or below. Avoid multiple freeze-thaw cycles.
Concentration	Batch dependent (Please refer to the vial label for the specific concentration.)
Immunogen	Synthetic phospho-peptide corresponding to amino acid residues surrounding Ser368 conjugated to KLH
Purification	Affinity Purified
Conjugation	Unconjugated

Note

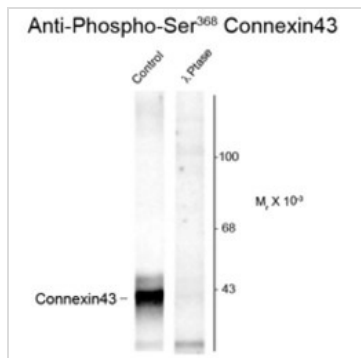
For laboratory research use only. Not for any clinical, therapeutic, or diagnostic use in humans or animals. Not for animal or human consumption.

Purchasers shall not, and agree not to enable third parties to, analyze, copy, reverse engineer or otherwise attempt to determine the structure or sequence of the product.



For full product information, images and publications, please visit our [website](#).

DATA IMAGES



GTx82717 WB Image

Western blot of rat hippocampal lysate showing phospho-specific immunolabeling of the ~43k Connexin 43 protein phosphorylated at Ser 368 using Connexin 43 (phospho Ser368) antibody (GTx82717).



For full product information, images and publications, please visit our [website](#).