

CNPase antibody

Cat. No. GTX82719

Host	Rabbit
Clonality	Polyclonal
Isotype	IgG
Applications	WB, ICC/IF, IHC
Reactivity	Human, Mouse, Rat, Rabbit, Sheep

Package
50 µl

Applications

Application Note

Optimal working dilutions should be determined experimentally by the end user.

Calculated MW 47 kDa. ([Note](#))

Properties

Form	Liquid
Buffer	Serum
Preservative	No preservatives
Storage	Store as concentrated solution. Centrifuge briefly prior to opening vial. For short-term storage (1-2 weeks), store at 4°C. For long-term storage, aliquot and store at -20°C or below. Avoid multiple freeze-thaw cycles.
Immunogen	Endogenous rabbit CNPase
Purification	Neat serum
Conjugation	Unconjugated

Note

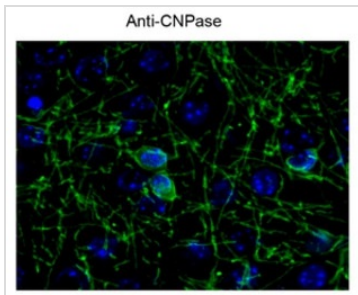
For laboratory research use only. Not for any clinical, therapeutic, or diagnostic use in humans or animals. Not for animal or human consumption.

Purchasers shall not, and agree not to enable third parties to, analyze, copy, reverse engineer or otherwise attempt to determine the structure or sequence of the product.

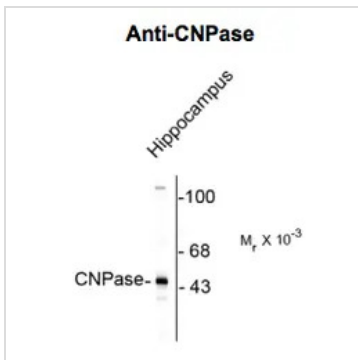


For full product information, images and publications, please visit our [website](#).

DATA IMAGES

**GTX82719 ICC/IF Image**

Immunochemical staining of saline treated mouse cortex cryosections with anti-CNP antibody (GTX82719) (green). Cell nuclei are visualized with DAPI DNA (blue).

**GTX82719 WB Image**

Western blot of rat brain lysate showing the specific immunolabeling of the ~46k CNP protein using CNP antibody (GTX82719).



For full product information, images and publications, please visit our [website](#).