

COL1A1 antibody

Cat. No. GTX82720

Host	Rabbit
Clonality	Polyclonal
Isotype	IgG
Applications	WB, ICC/IF, IHC-P
Reactivity	Human, Mouse, Rat, Sheep

References (3)

★★★★★ Review (1)

Package
100 µl

Applications

Application Note

We recommend the following starting dilutions:

For WB: Use at a dilution of 1:1000.

For IHC: Use at a dilution of 1:100.

Optimal dilutions should be determined by the end user.

Calculated MW 139 kDa. ([Note](#))

Properties

Form	Liquid
Buffer	PBS
Preservative	No preservatives
Storage	Store as concentrated solution. Centrifuge briefly prior to opening vial. For short-term storage (1-2 weeks), store at 4°C. For long-term storage, aliquot and store at -20°C or below. Avoid multiple freeze-thaw cycles.
Concentration	Batch dependent (Please refer to the vial label for the specific concentration.)
Immunogen	The immunogen corresponding to a region within amino acids 1200 and 1250 of human collagen I $\alpha 1$ telopeptide.
Purification	Affinity Purified
Conjugation	Unconjugated

Note

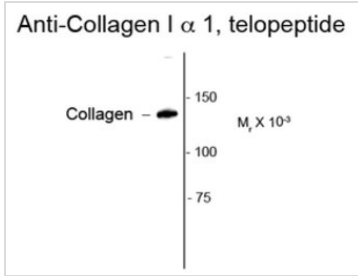
For laboratory research use only. Not for any clinical, therapeutic, or diagnostic use in humans or animals. Not for animal or human consumption.

Purchasers shall not, and agree not to enable third parties to, analyze, copy, reverse engineer or otherwise attempt to determine the structure or sequence of the product.

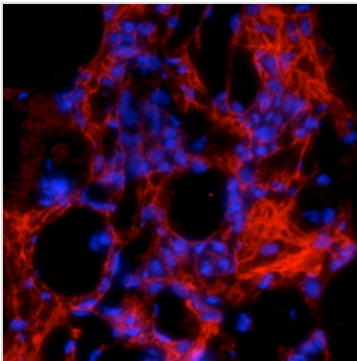


For full product information, images and publications, please visit our [website](#).

DATA IMAGES

**GTX82720 WB Image**

Western blot of rat lung lysate showing specific immunolabeling of the ~140k collagen protein using COL1A1 antibody (GTX82720).

**GTX82720 IHC-P Image**

Immunostaining of formaldehyde-fixed fibrotic mouse lung tissue. The antibody recognizes mature collagen I (red) that has formed fibrils in the extracellular matrix



For full product information, images and publications, please visit our [website](#).