

## CDC2 (phospho Tyr15) antibody

**Cat. No. GTX82728**

<b>Host</b>	Rabbit
<b>Clonality</b>	Polyclonal
<b>Isotype</b>	IgG
<b>Applications</b>	WB
<b>Reactivity</b>	Human, Xenopus laevis

**Package**  
100 µl

## Applications

**Application Note**

Optimal working dilutions should be determined experimentally by the end user.

**Calculated MW** 34 kDa. ([Note](#))

## Properties

<b>Form</b>	Liquid
<b>Buffer</b>	10mM HEPES, 150mM NaCl, 0.01% BSA, 50% Glycerol
<b>Preservative</b>	No preservatives
<b>Storage</b>	Store as concentrated solution. Centrifuge briefly prior to opening vial. For short-term storage (1-2 weeks), store at 4°C. For long-term storage, aliquot and store at -20°C or below. Avoid multiple freeze-thaw cycles.
<b>Concentration</b>	Batch dependent (Please refer to the vial label for the specific concentration.)
<b>Immunogen</b>	Synthetic phospho-peptide corresponding to amino acid residues surrounding Tyr15 conjugated to KLH
<b>Purification</b>	Affinity Purified
<b>Conjugation</b>	Unconjugated

**Note**

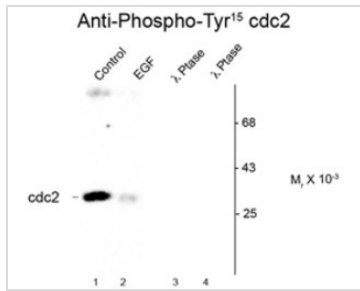
For laboratory research use only. Not for any clinical, therapeutic, or diagnostic use in humans or animals. Not for animal or human consumption.

Purchasers shall not, and agree not to enable third parties to, analyze, copy, reverse engineer or otherwise attempt to determine the structure or sequence of the product.



For full product information, images and publications, please visit our [website](#).

## DATA IMAGES

**GTx82728 WB Image**

Western blot of human T47D cells showing phospho-specific immunolabeling of the ~34k cdc2 protein phosphorylated at Tyr 15. In lane 2, cells were treated with EGF leading to dephosphorylation of Tyr 15 using CDC2 (phospho Tyr15) antibody (GTx82728).



For full product information, images and publications, please visit our [website](#).